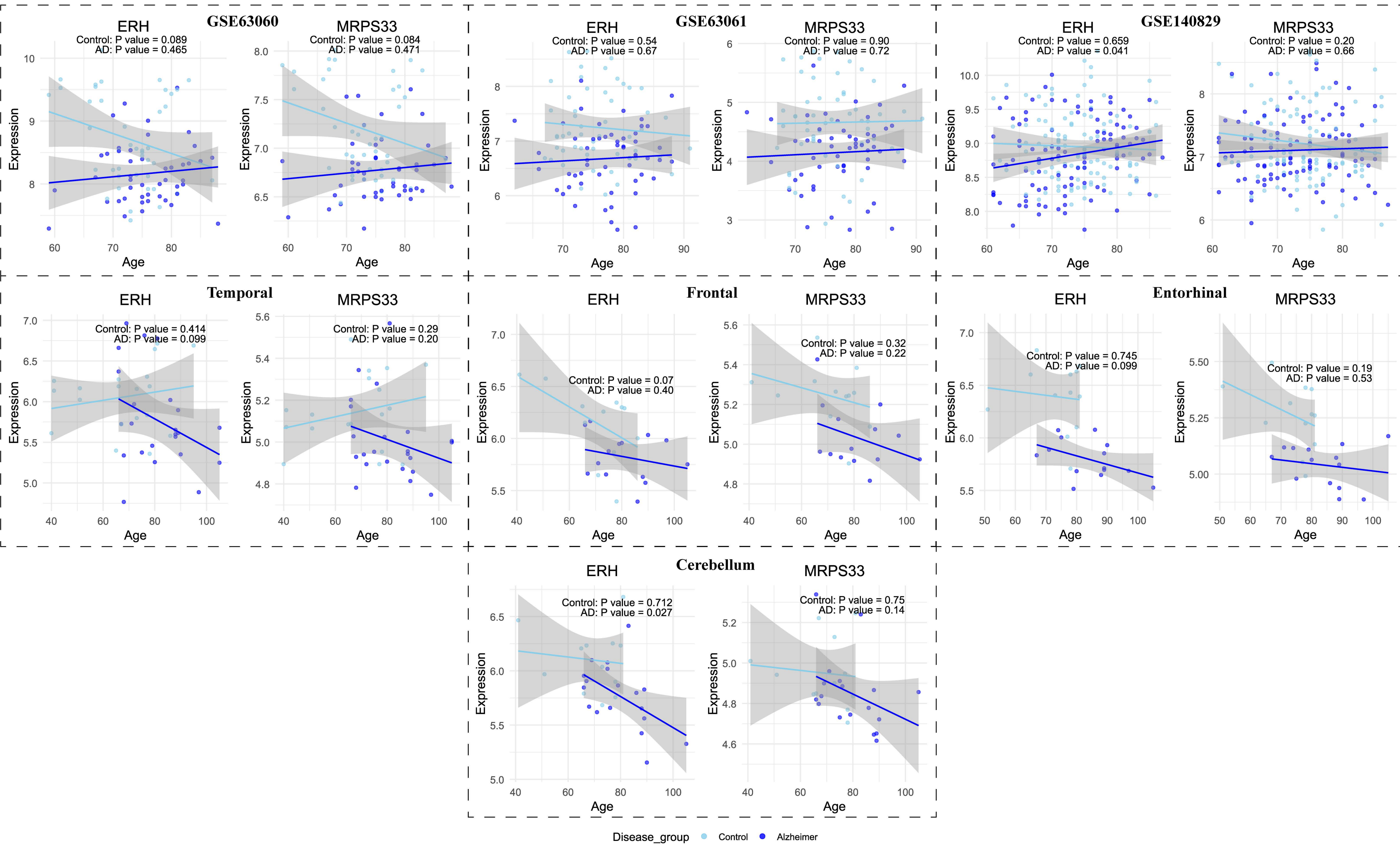
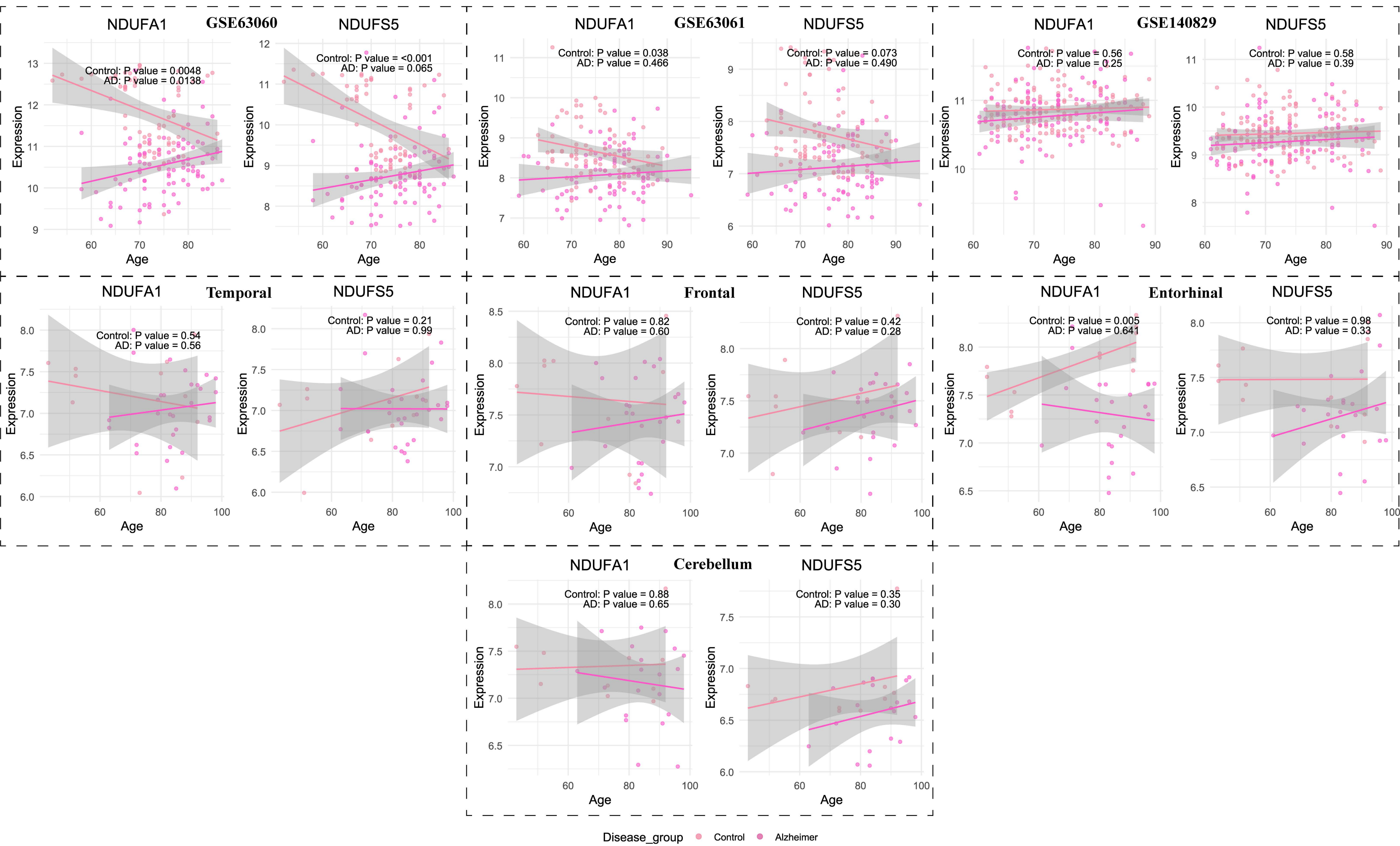


Supplementary Figure 1 Linear regression analysis between MRPS33/ERH and age in male cohort.



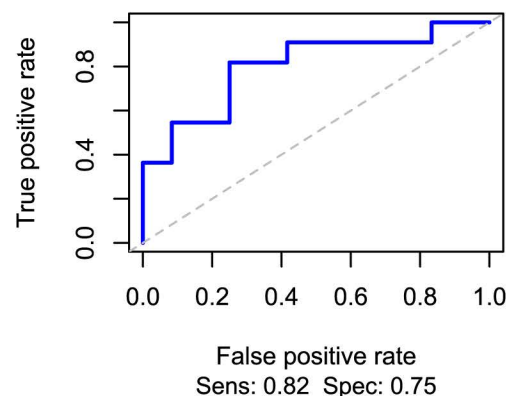
Supplementary Figure 2 Linear regression analysis between NDUFA1/NDUFS5 and age in female cohort.



Supplementary Figure 3 Receiver Operating Characteristic (ROC) curve for logistic regression models trained using ERH (top two rows) and MRPS33 (bottom two rows) in male cohort (brain tissue, asymptomatic patients with Alzheimer's disease).

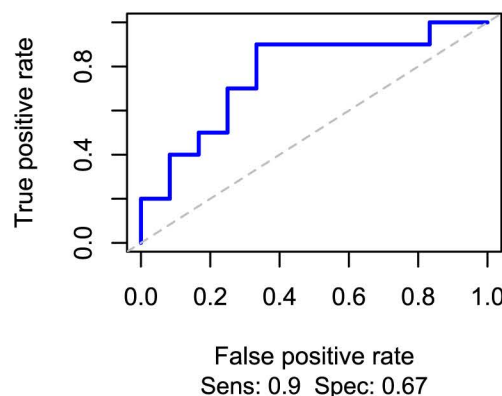
ERH - GSE118553_cerebellum

AUC: 0.8



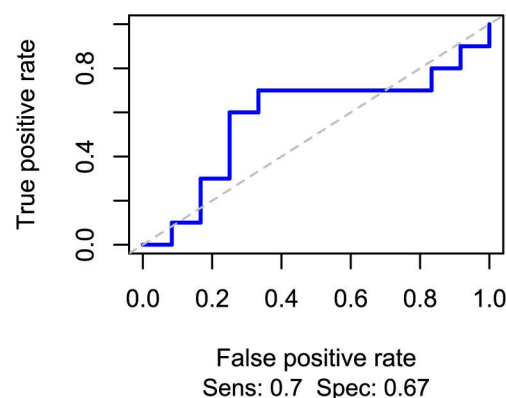
ERH - GSE118553_entorhinal

AUC: 0.77



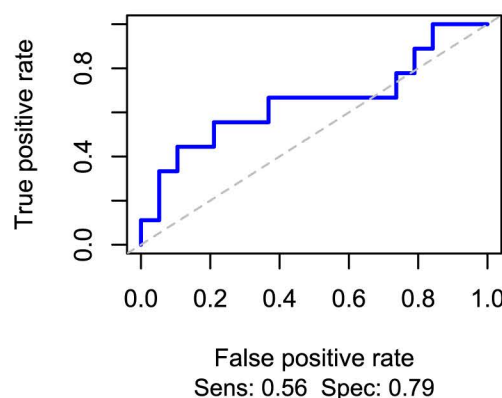
ERH - GSE118553_frontal

AUC: 0.58



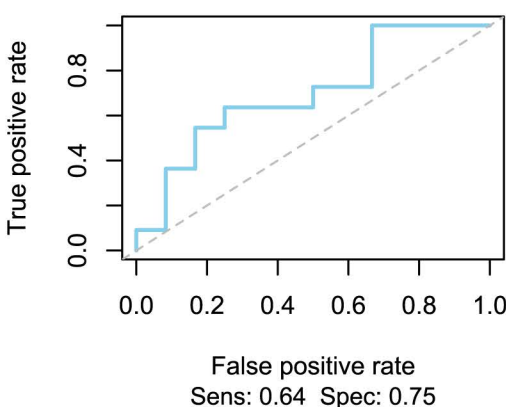
ERH - GSE118553_temporal

AUC: 0.65



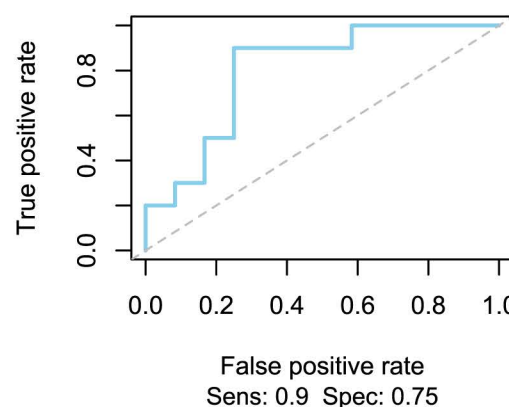
MRPS33 - GSE118553_cerebellum

AUC: 0.7



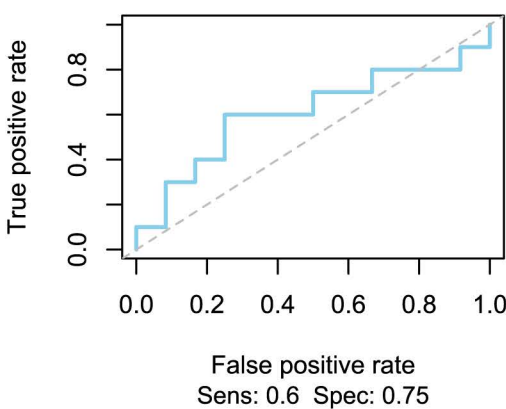
MRPS33 - GSE118553_entorhinal

AUC: 0.8



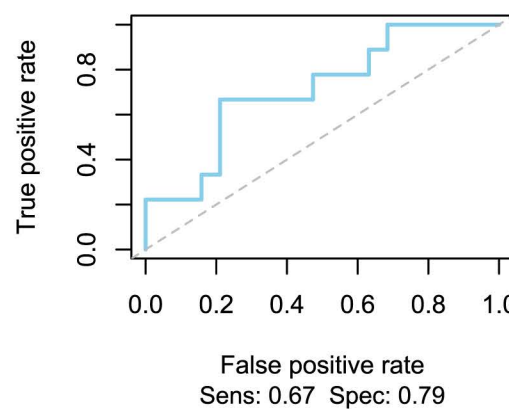
MRPS33 - GSE118553_frontal

AUC: 0.61



MRPS33 - GSE118553_temporal

AUC: 0.71



Supplementary Figure 4 Receiver Operating Characteristic (ROC) curve for logistic regression models trained using NDUFA1 (top two rows) and NDUFS5 (bottom two rows) in female cohort (brain tissue, asymptomatic patients with Alzheimer's disease).

