

Erratum

Overexpression of ATAD2 indicates Poor Prognosis in Oral Squamous Cell Carcinoma: Erratum

Xiao-Long Wang^{1,3}, Shuo Wang¹, Zhi-Zhong Wu¹, Qi-Chao Yang¹, Hao Li¹, Hong-Gang Xiong¹, Shu-Cheng Wan¹, Zhi-Jun Sun^{1,2}✉

1. The State Key Laboratory Breeding Base of Basic Science of Stomatology (Hubei-MOST) & Key Laboratory of Oral Biomedicine Ministry of Education, School & Hospital of Stomatology, Wuhan University, Wuhan, China.
2. Department of Oral Maxillofacial-Head Neck Oncology, School & Hospital of Stomatology, Wuhan University, Wuhan, China.
3. Department of Stomatology, Xiangyang Central Hospital, Affiliated Hospital of Hubei University of Arts and Science, Xiangyang, China.

✉ Corresponding author: Zhi-Jun Sun, Professor and Chief Surgeon, Department of Oral Maxillofacial- Head Neck Oncology; School and Hospital of Stomatology, Wuhan University; 237 Luoyu Road, Wuhan, 430079, China. Tel: +86 27 8768 6108; Fax: +86 27 8787 3260; E-mail: sunzj@whu.edu.cn.

© The author(s). This is an open access article distributed under the terms of the Creative Commons Attribution License (<https://creativecommons.org/licenses/by/4.0/>). See <http://ivyspring.com/terms> for full terms and conditions.

Published: 2025.03.28

Corrected article: *Int J Med Sci* 2020; 17(11): 1598- 1609. doi: 10.7150/ijms.46809.

When reviewing the previous work, we realized the Figure 3A in the published article has mistakenly used images. Specifically, the representative IHC image of “Slug” in Figure 3A was misused. The corrected Figure 3A is displayed below. We sincerely apologize for this error. All authors have confirmed that the mistake does not affect the original conclusions.

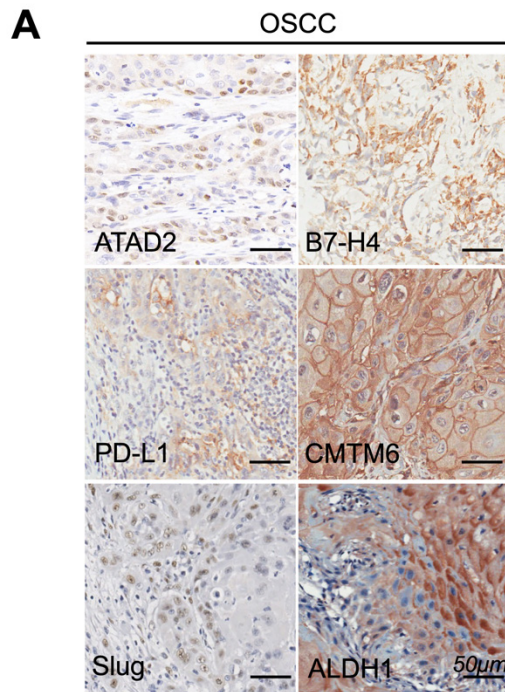


Figure 3A. Representative immunohistochemical staining of ATAD2, B7-H4, PD-L1, CMTM6, Slug and ALDH1 in OSCC. Scale bar, 50 µm.