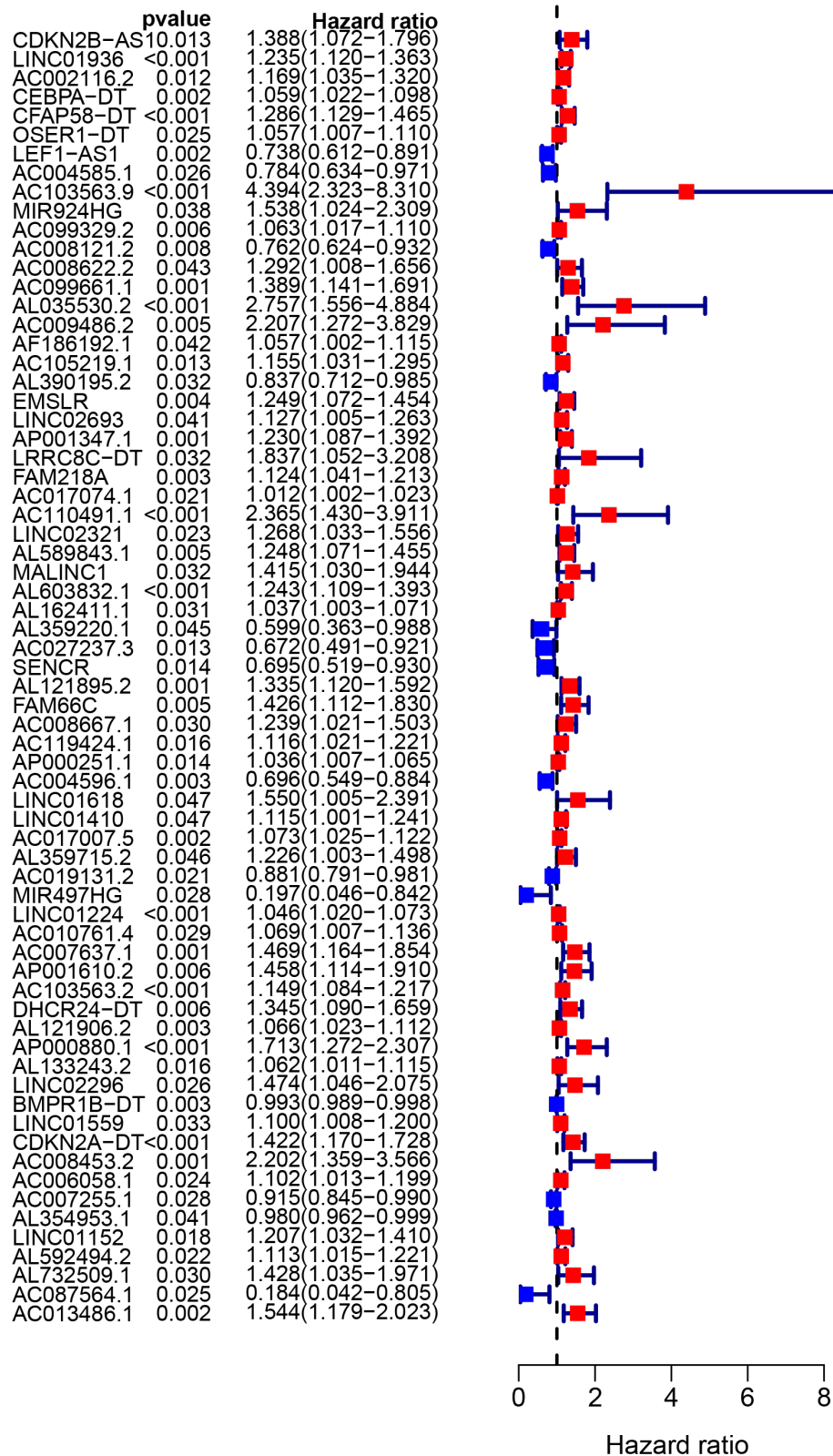
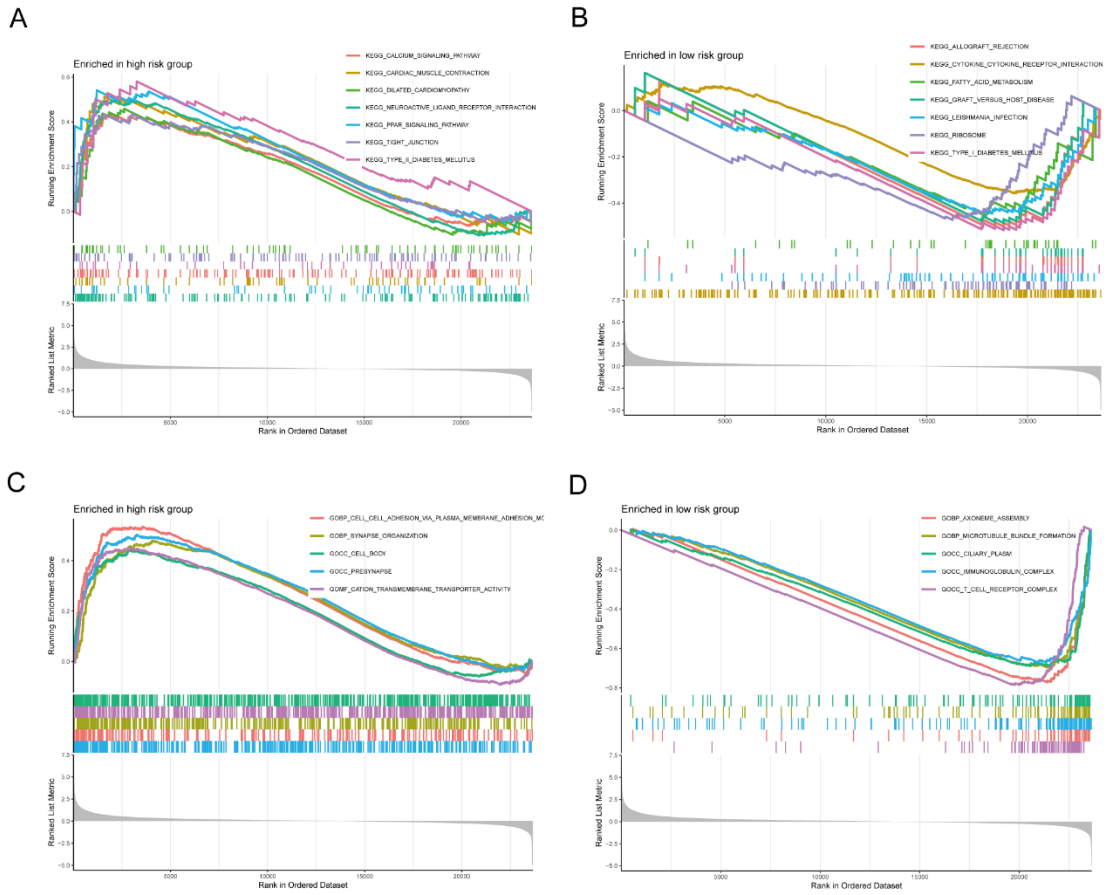


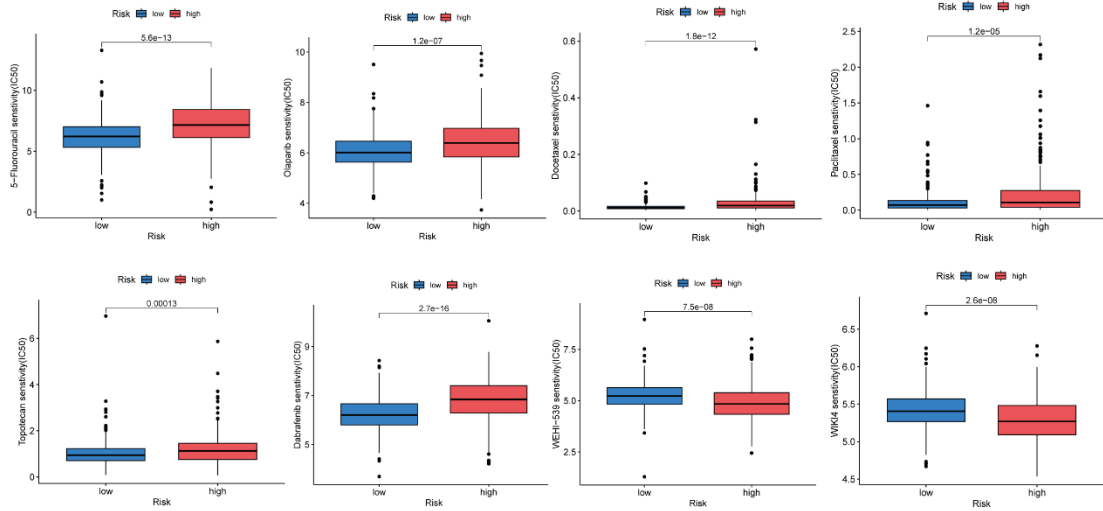
## Supplementary



**Figure S1** univariate cox regression analysis of 68 DE-ARLNCRs



**FigureS2** GSEA shows the top enriched pathways and biological functions of the high- and low-risk groups.



**FigureS3** Estimated drug sensitivity in patients of the high- and low-risk groups. IC50 means half inhibitory centration.

| cell line | PTEN     | TP53     | PIK3CA | ARID1A   | CTNNB1 | KRAS |
|-----------|----------|----------|--------|----------|--------|------|
| HEC1B     | /        | SNV      | SNV    | SNV      | /      | SNV  |
| Ishikawa  | deletion | SNV      | /      | deletion | /      | /    |
| KLE       | /        | SNV      | /      | /        | /      | /    |
| HEC1A     | /        | SNV      | SNV    | SNV      | SNV    | SNV  |
| RL952     | SNV      | deletion | /      | SNV      | /      | /    |

"/" means wild type, "SNV" means single nucleotide variant.

**TableS1** The mutation statuses of six driver genes across the individual cell lines used from the DepMap portal website.