

Fig. S1. CCK-8 assays demonstrated that overexpression of LINC00662 slightly promoted cell proliferation in SK-MEL-28 and A375 cells. Cell proliferation was significantly increased due to LINC00662 overexpression in M21 cells.

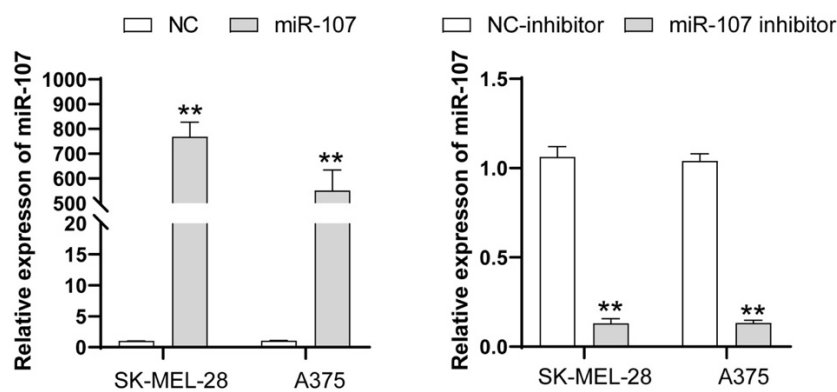


Fig. S2. The expression level of miR-107 was significantly increased by treatment with the miR-107 mimic and decreased by treatment with the miR-107 inhibitor in SK-MEL-28 and A375 cells.

Table S1. Primer sequences used for RT-qPCR and cell transfection.

Targets	Name	Sequence
Primers used for RT-qPCR.		
LINC00662	F:	5'-TGGACATCTGTCTGGAGG-3'
	R:	5'-GGCTGAGGCATAAGAATCG-3'
miR-107	F:	5'-ATGATGAGCAGCATTGTACAGG-3'
	R:	5'-GCAGGGTCCGAGGTATTC-3'
POU3F2	F:	5'-GAAGTGTCCAATCAGTGTGG-3'
	R:	5'-GTCAGTGTCCAAGAAGGAC-3'
β -actin	F:	5'-GGGAAATCGTGCGTGACATTAAG-3'

	R:	5'-TGTGTTGGCGTACAGGTCTTTG-3'
GAPDH	F:	5'-GGAGCGAGATCCCTCCAAAAT-3'
	R:	5'- GG CTGTTGTCATACTTCTCATGG -3'
U6	F:	5'-GCTTCGGCAGCACATATACTAAAAT-3'
	R:	5'-CGCTTCACGAATTTGCGTGTCAT-3'

Primers used for cell transfection.

si-LINC00662-1	AAUGUACACUUAUUCAUUGCA
si-LINC00662-2	AUACAAAGACCGUUCAAUGGG
si-NC	UUCUCCGAACGUGUCACGUUU
miR-107 mimics	AGCAGCAUUGUACAGGGCUAUCA
miR-107 inhibitor	UGAUAGCCCUGUACAAUGCUG
miR-NC mimics	UUGUACUACACAAAAGUACUG

Note: F: Forward primer; R: Reverse primer. GAPDH, glyceraldehyde-3-phosphate dehydrogenase;