

Erratum

Trehalose inhibits H₂O₂-induced autophagic death in dopaminergic SH-SY5Y cells via mitigation of ROS-dependent endoplasmic reticulum stress and AMPK activation: Erratum

Zhijie Gao^{1#}, Helei Wang^{2#}, Bo Zhang³, Xuemei Wu³, Yanfeng Zhang³, Pengfei Ge^{1,4}, Guangfan Chi⁵, Jianmin Liang^{3,4}✉

1. Department of Neurosurgery, First hospital of Jilin University, Changchun 130021, China.
2. Department of Gastrointestinal Surgery, First hospital of Jilin University, Changchun 130021, China.
3. Department of Pediatric Neurology, First hospital of Jilin University, Changchun 130021, China.
4. Research center of neuroscience, First hospital of Jilin University, Changchun 130021, China.
5. Key Laboratory of Pathobiology, Ministry of Education, Jilin University, Changchun 130021, China.

#: These two authors contributed equally to this work.

✉ Corresponding author: Jianmin Liang, M.D., Ph.D., E-mail: liangjm@jlu.edu.cn. Address: Department of Pediatrics Neurology, First Hospital, Jilin University, 71 Xinmin Avenue, Changchun 130021, Jilin Province, P.R.China.

© The author(s). This is an open access article distributed under the terms of the Creative Commons Attribution License (<https://creativecommons.org/licenses/by/4.0/>). See <http://ivyspring.com/terms> for full terms and conditions.

Published: 2023.09.08

Corrected article: *Int J Med Sci* 2018; 15(10): 1014-1024. doi: 10.7150/ijms.25656.

The authors regret that they divided the blots from the same groups of samples into two images (Fig. 4 C and 4D) in consideration of layout neatness but used the same β -actin. Although Fig. 4 C and D were both from the same group of samples, it is not properly to use the same β -actin in Fig. 4 C and 4D. Similar blot division and usage of the same β -actin could also be found in Fig 5B and 5C. The authors would like to merge figure Fig. 4C and D into one image, and merge figure Fig.5B and 5C into one image. Thus, they make this corrigendum.

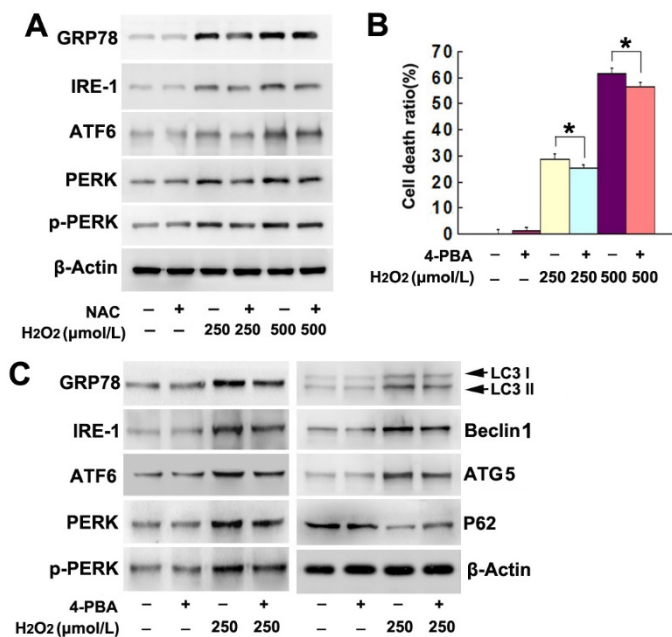


Figure 4. Corrected figure.

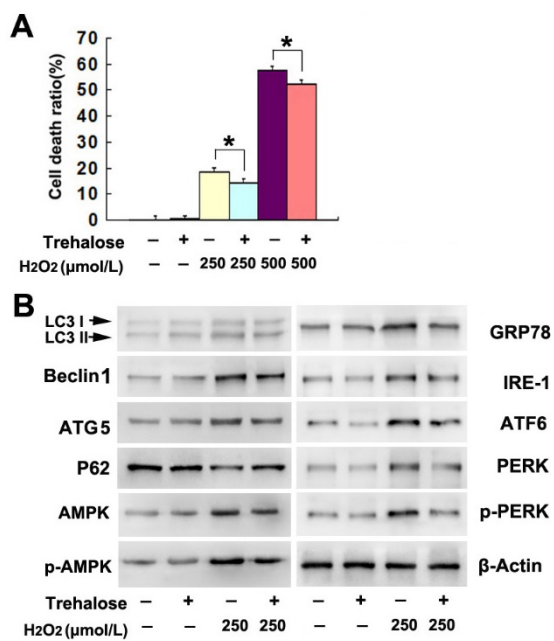


Figure 5. Corrected figure.