

Supplementary data

Table S1 Binomial logistic regression model

	Odds ratio	95% confidence interval	p-value
BVF (%)	0.51	0.22-1.19	0.118
StO ₂ (%)	1.10	0.99-1.23	0.090
BIL (μMol/L)	0.99	0.96-1.01	0.331
Serum BIL (μMol/L)	1.01	0.99-1.03	0.224

Abbreviations: BVF: blood volume fraction; StO₂: microvascular saturation; BIL: bilirubin concentration.

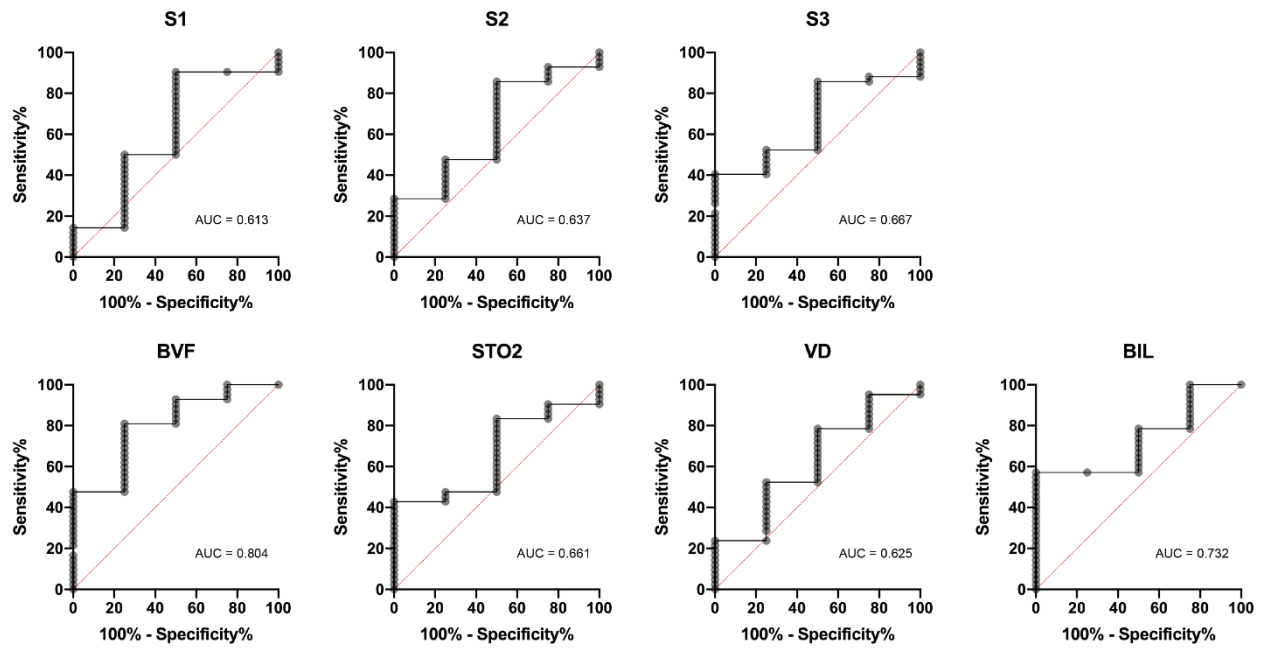


Figure S1. Overview on receiver-operating characteristic (ROC) curves of individual parameters after linear discriminant analysis.

Abbreviations: S1: Mie amplitude; S2: Mie slope; S3: Rayleigh amplitude; BVF: blood volume fraction; StO₂: microvascular saturation; VD: blood vessel diameter; BIL: bilirubin concentration.

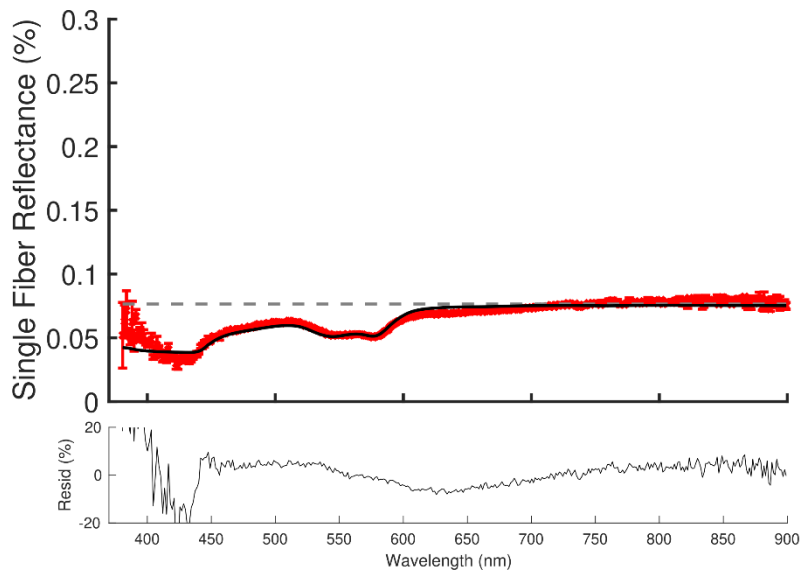


Figure S2. An example of reflectance spectra of normal pancreatic tissue. In two patients it was possible to perform measurements in normal pancreatic tissue (based on endoscopic ultrasound (EUS) view of the endoscopist) during the retraction of the fiber after a biopsy in a suspicious lesion. Due to the risk on EUS induced pancreatitis no biopsy has been taken in normal looking pancreatic tissue, so these measurement could not be histologically confirmed.