

SUPPLEMENTARY DATA

Cellular and tissue selectivity of AAV serotypes for gene delivery to chondrocytes and cartilage

Dong Suk Yoon^{1#}, Kyoung-Mi Lee^{1,2#}, Sehee Cho^{1,3#}, Eun Ae Ko¹, Jihyun Kim¹, Sujin Jung¹,
Jae-Hyuck Shim^{4,5,6}, Guangping Gao^{5,6,7,8}, Kwang Hwan Park¹, Jin Woo Lee^{1,2,3}

¹Department of Orthopedic Surgery, Yonsei University College of Medicine, Seoul 03722, South Korea

²Severance Biomedical Science Institute, Yonsei University College of Medicine, Seoul 03722, South Korea

³Brain Korea 21 PLUS Project for Medical Science, Yonsei University College of Medicine, Seoul 03722, South Korea

⁴Division of Rheumatology, University of Massachusetts Medical School, Worcester, MA 01605, USA

⁵Li Weibo Institute for Rare Diseases Research, University of Massachusetts Medical School, Worcester, MA 01605, USA

⁶Horae Gene Therapy Center, University of Massachusetts Medical School, Worcester, MA 01605, USA

⁷Department of Microbiology and Physiological Systems, University of Massachusetts Medical School, Worcester, MA 01605, USA

⁸Viral Vector Core, University of Massachusetts Medical School, Worcester, MA 01605, USA

DSY, K-ML, and SC contributed equally to this work and are co-first authors to this article.

Corresponding authors: Professor Jin Woo Lee, Department of Orthopaedic Surgery, Yonsei University College of Medicine, Seoul 03722, South Korea; ljwos@yuhs.ac (Tel: +82 2 2228 2190) and Professor Kwang Hwan Park, Department of Orthopaedic Surgery, Yonsei University College of Medicine, Seoul 03722, South Korea; khpark@yuhs.ac (Tel: +82 2 2228 2185)

SUPPLEMENTARY FIGURES

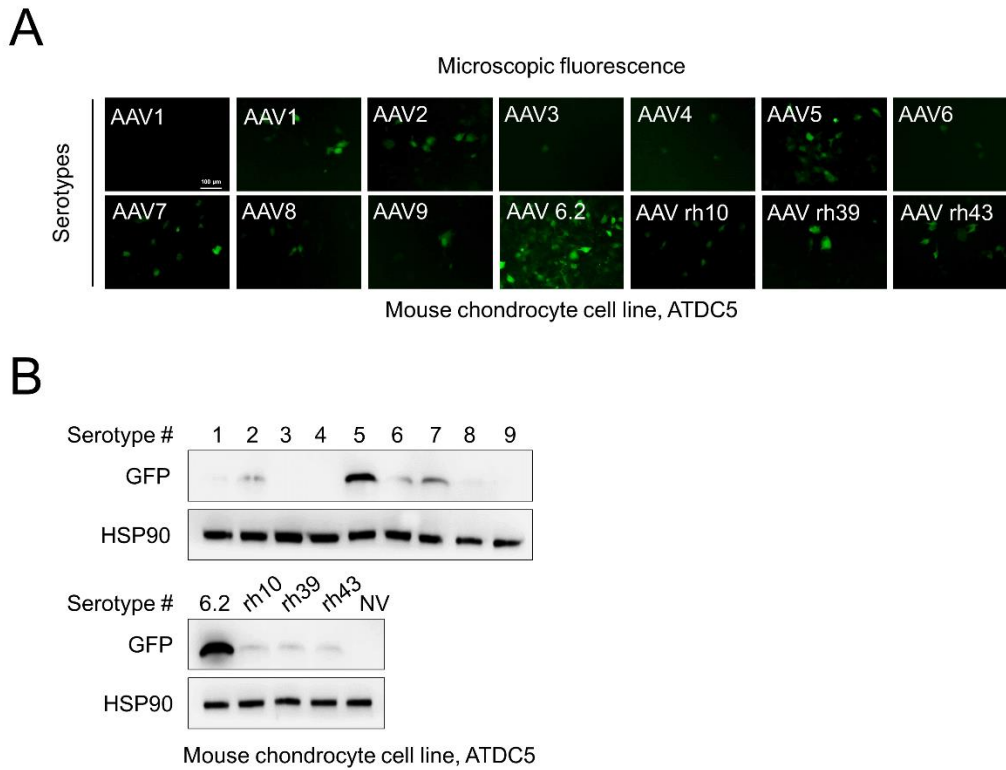


Figure S1. Transduction efficiency of individual AAV serotypes in ATDC5 cells. (A) Representative fluorescence images depicting GFP expression in ATDC5 cells 2 days after transduction with individual AAV serotypes. (Scale bar = 100 μ m). (B) Western blot analysis of GFP expression 48 h after ATDC5 cells were transduced with individual AAV serotypes.