

Table S1. Relationship between UHRF2 protein level and clinicopathological features in 20 HCC patients.

Characteristic	UHRF2		<i>P</i> value	
	Low	High		
Age	<50	4	2	0.628
	≥50	6	8	
Tumor size	<5	3	4	1.000
	≥5	7	6	
AFP	<400	9	6	0.303
	≥400	1	4	
HBV DNA	-	8	4	0.170
	+	2	6	
HBsAg	-	0	1	1.000
	+	10	9	
TNM stage	I- II	8	2	0.023*
	III-IV	2	8	

**P*<0.05

Fig. S1

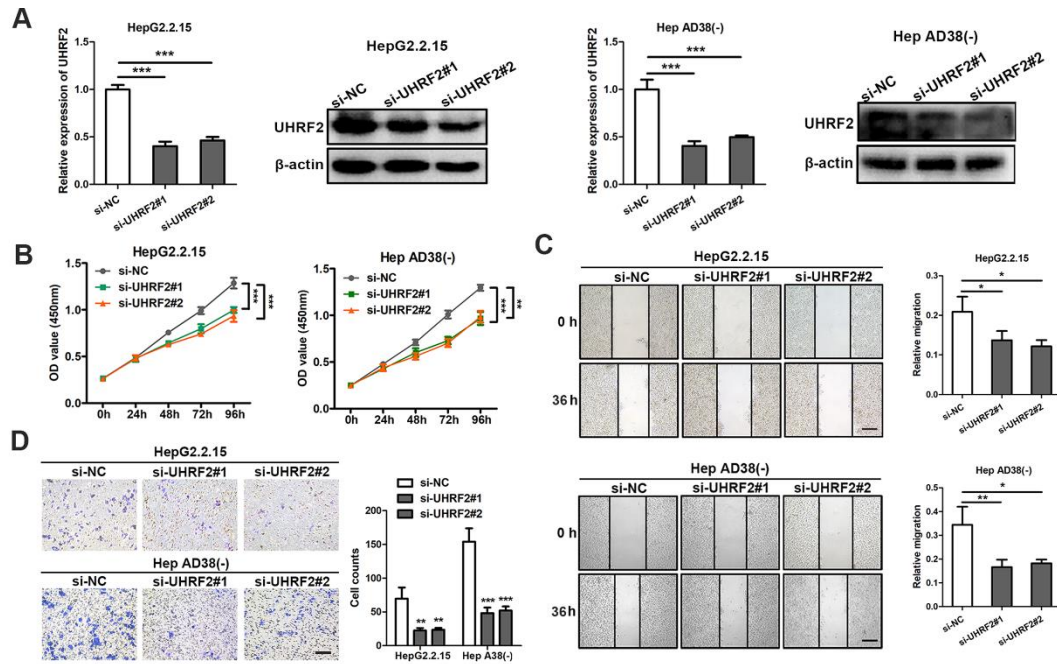


Fig. S2

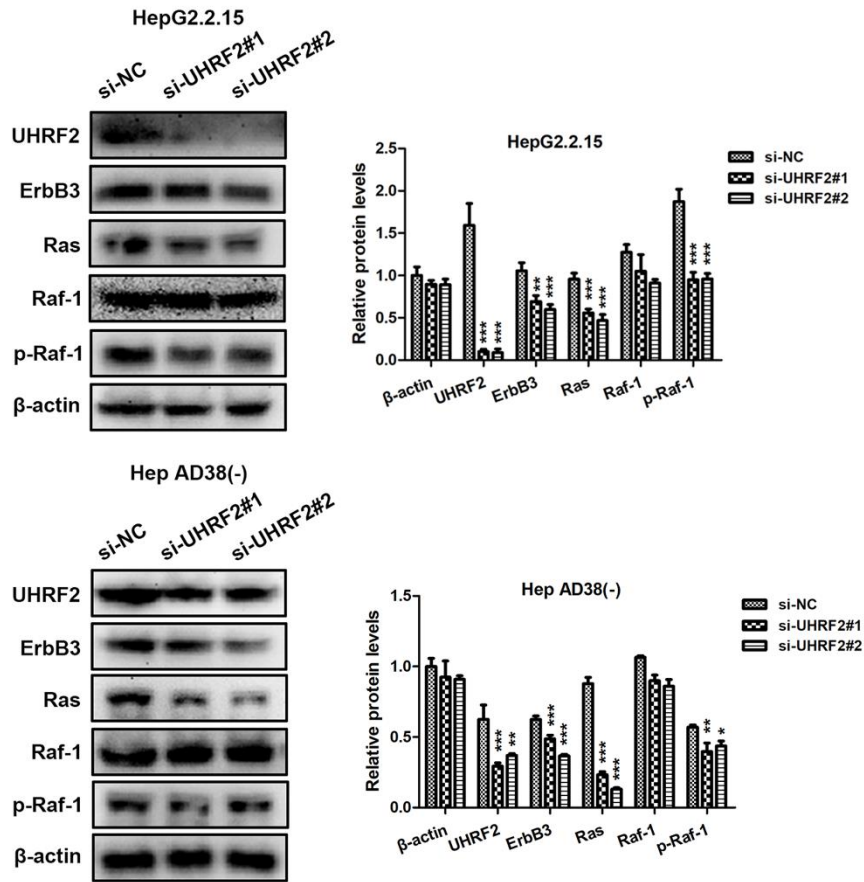


Figure S1. Knock down of UHRF2 inhibits the proliferation, migration and invasion of HCC cell lines. **(A)** The expression of UHRF2 was detected by qRT-PCR and western blot in HepG2.2.15 and Hep AD38(-) cells after transfected with indicated siRNAs. **(B)** Growth curves of HepG2.2.15 and Hep AD38(-) cells were determined by CCK-8 assays. **(C)** Wound healing assays were performed to detect the migration of HepG2.2.15 and Hep AD38(-) cells. Scale bar, 200 μm . **(D)** Transwell assays were applied to determine the invasion of HepG2.2.15 and Hep AD38(-) cells. Scale bar, 100 μm . Data were showed as mean \pm SD. * $P < 0.05$, ** $P < 0.01$, *** $P < 0.001$.

Figure S2. Downregulation of UHRF2 decreases the protein level of ErbB3/Ras/Raf signaling pathway. Data were showed as mean \pm SD. * $P < 0.05$, ** $P < 0.01$, *** $P < 0.001$.