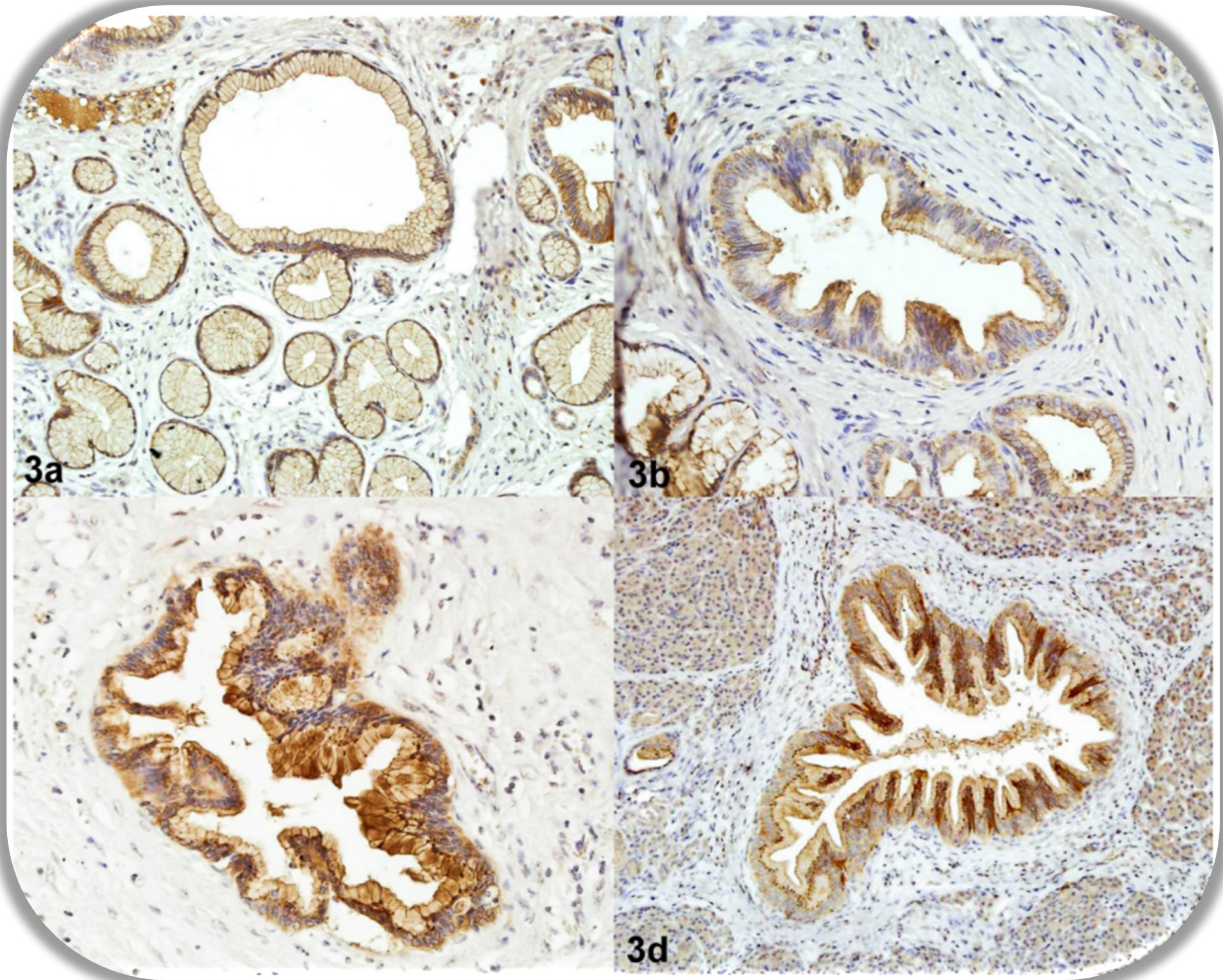


International Journal of Medical Sciences



COVER FEATURE: Justyna Zińczuk, Konrad Zaręba, Wioletta Romaniuk *et al.* Expression of Chosen Carcinoembryonic-Related Cell Adhesion Molecules in Pancreatic Intraepithelial Neoplasia (PanIN) Associated with Chronic Pancreatitis and Pancreatic Ductal Adenocarcinoma (PDAC)

ISSN 1449-1907



IVYSPRING
INTERNATIONAL PUBLISHER