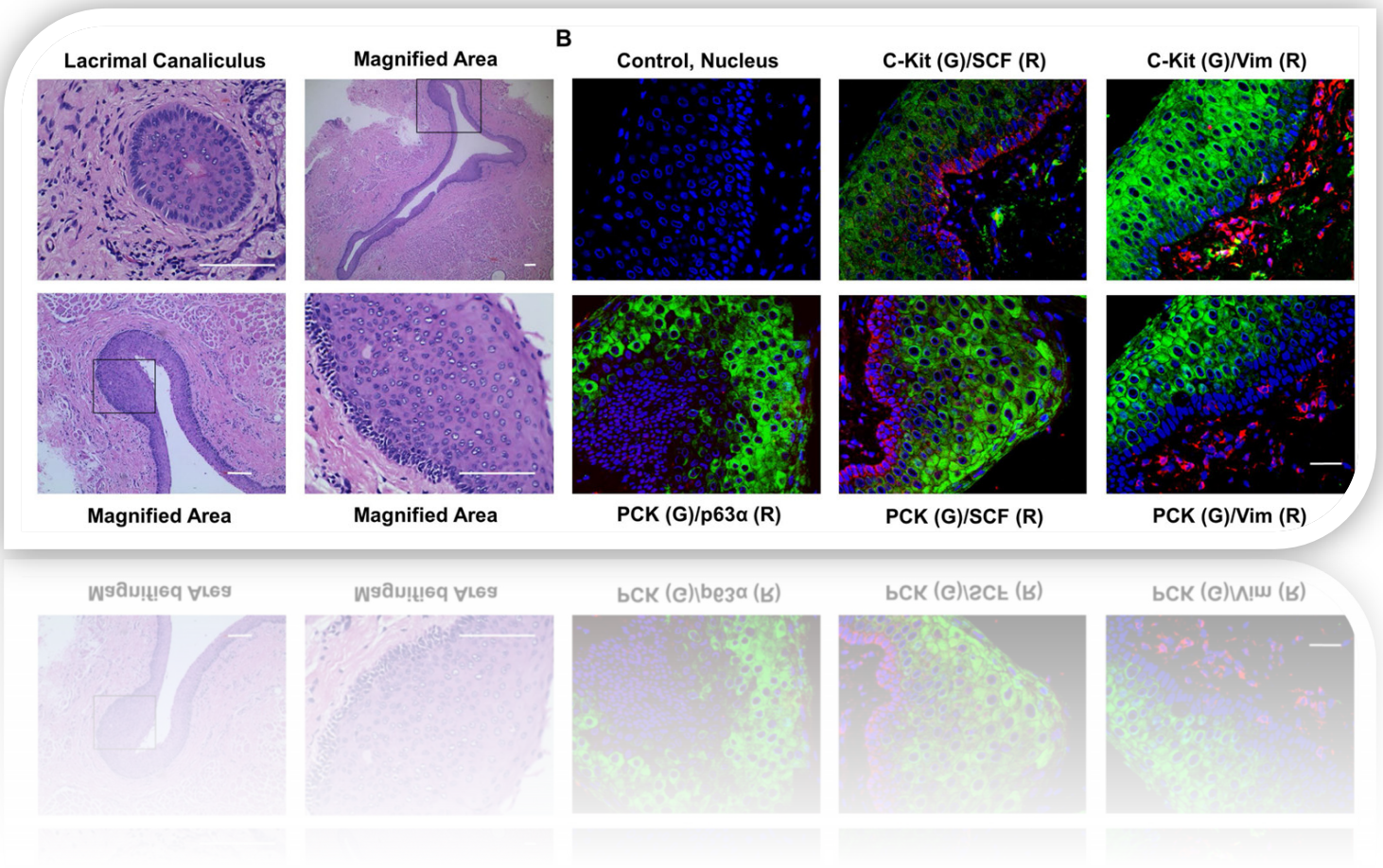


International Journal of Medical Sciences



COVER FEATURE: Weikun Hu, Yuan Zhang, Sean Tighe, Ying-Tieng Zhu and Gui-Gang Li. A New Isolation Method of Human Lacrimal Canaliculus Epithelial Stem Cells by Maintaining Close Association with Their Niche Cells

ISSN 1449-1907



9 771449 190003



IVYSPRING
INTERNATIONAL PUBLISHER