

## Supplementary Materials

Figure S1

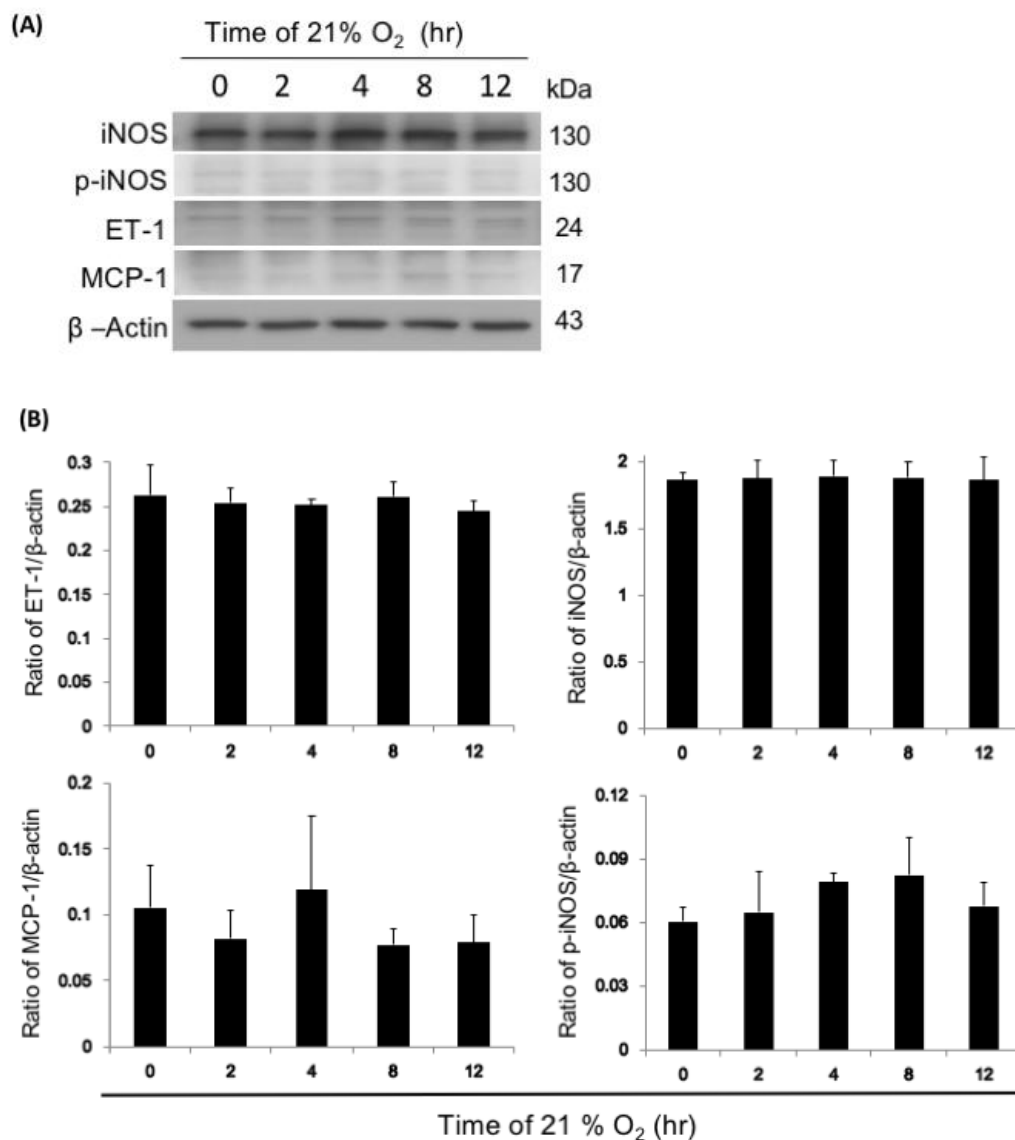


Figure S1. Effect of iNOS, p-iNOS, MCP-1 and ET-1 in NR8383 cells under 21% O<sub>2</sub> environment. (A) The cells were exposed with 21% O<sub>2</sub> (0, 2, 4, 8 and 12 hr), and then western blot analysis was performed for iNOS, p-iNOS, MCP-1 and ET-1. Representative blot from three independent experiments. (B) Quantification of band intensities. All data were reported as the means  $\pm$  SD of at least three separate experiments. Statistical analysis used the t-test, with significant differences determined at the level of \*  $p < 0.05$  vs. 0 hour.