

Supplementary Figure

Figure S1

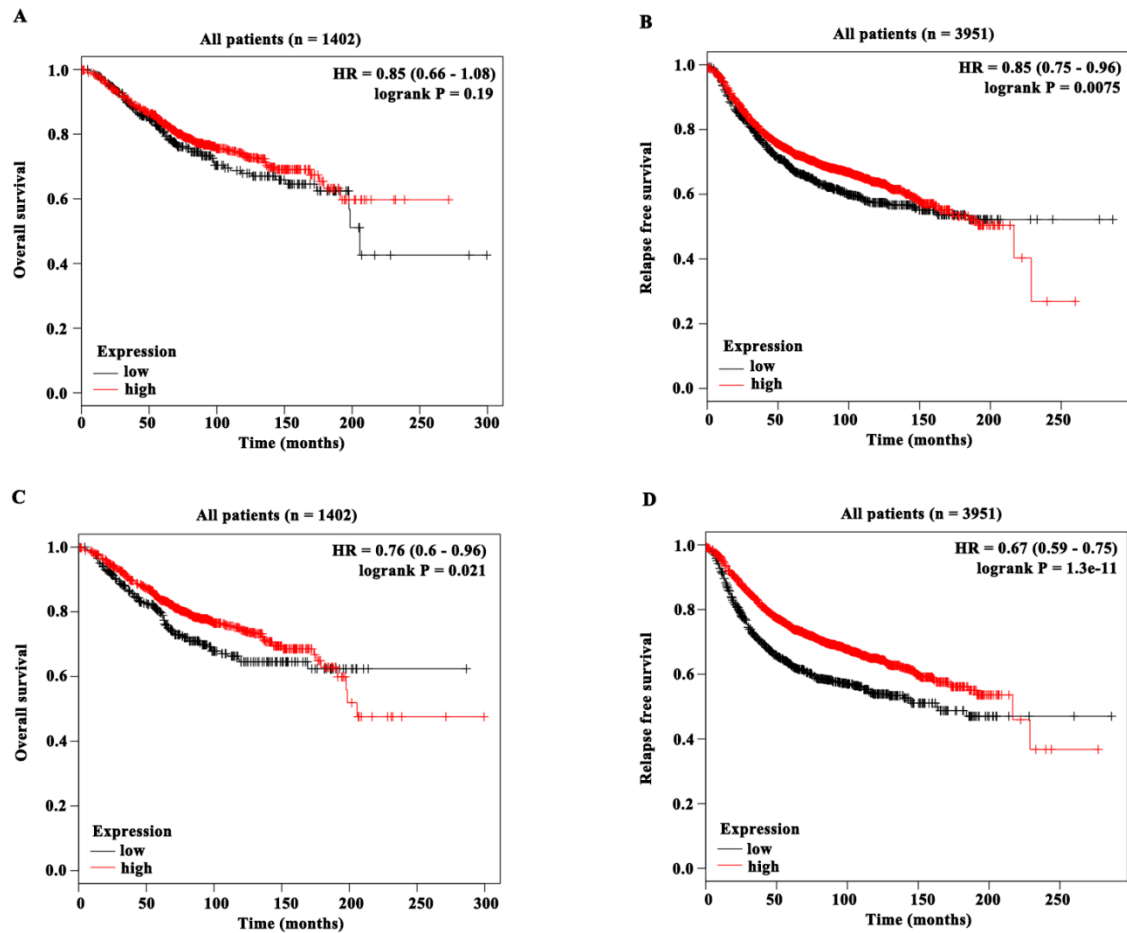


Figure S1 The prognostic value of DUSP1 and DUSP5 in large cohort of breast cancer patients. (A) DUSP1 expression wasn't significantly associated with OS of breast cancer patients. (B) DUSP1 expression was significantly associated with RFS of breast cancer patients. (C-D) DUSP5 expression was not only associated with OS, but also significantly associated with RFS of breast cancer patients.