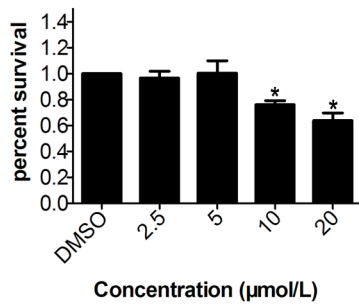


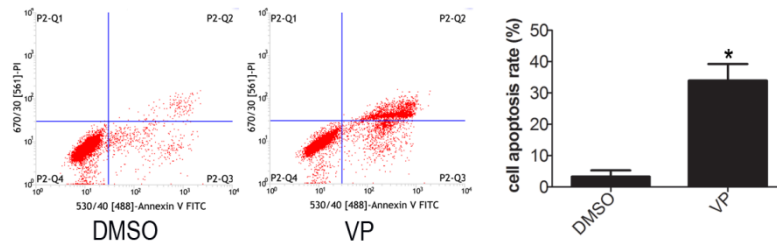
## Supplementary Material

Supplementary material for:

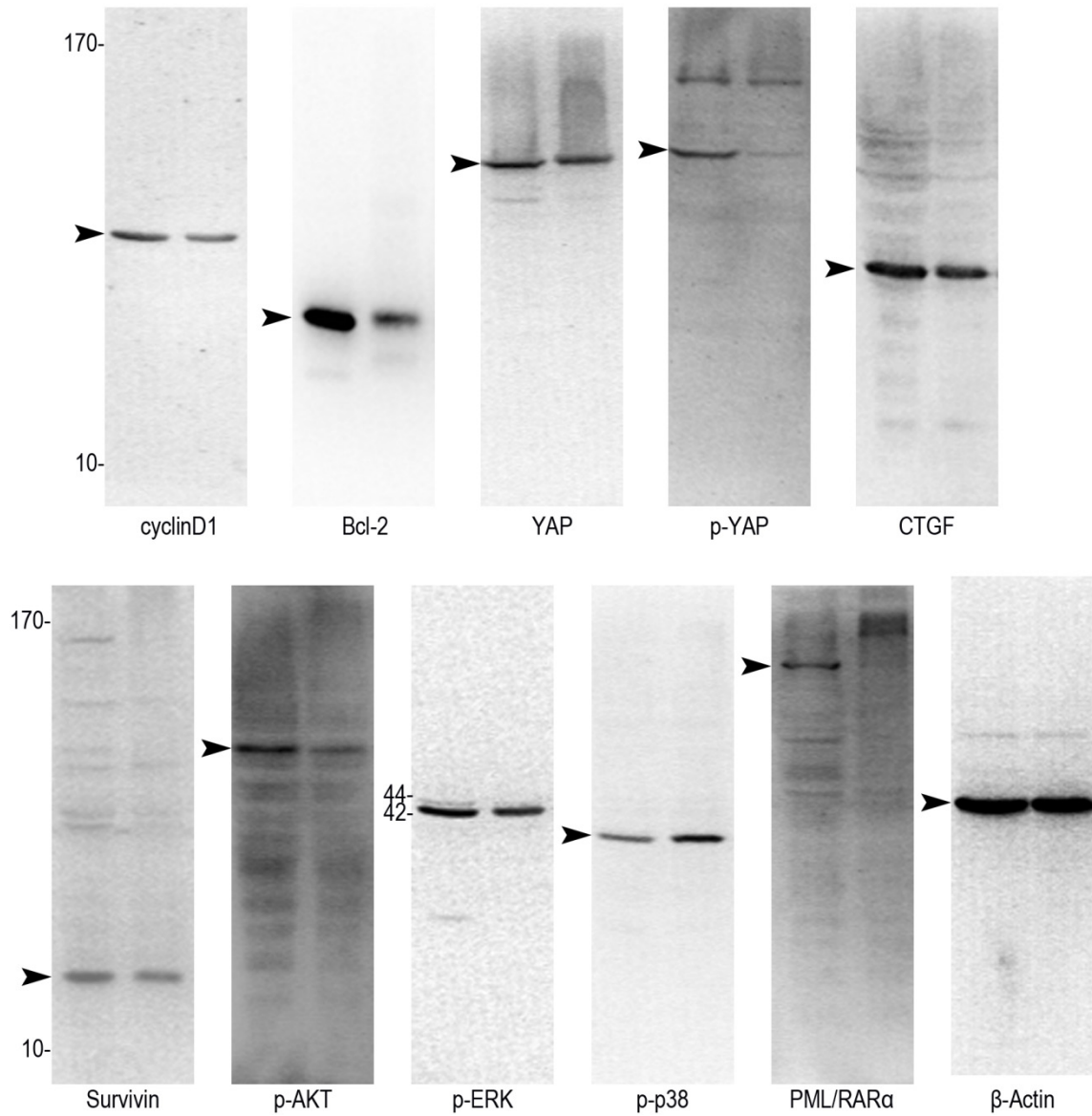
### ***Verteporfin Inhibits Cell Proliferation and Induces Apoptosis in Human Leukemia NB4 Cells without Light Activation.***



**Supplementary Figure 1.** VP inhibits cell proliferation of NB4 cells. NB4 cells were treated with different concentration of VP for 24 h. CCK-8 assay was used to test the cellular viability of NB4 cells. Data are expressed as means  $\pm$  SD. \*P < 0.05.



**Supplementary Figure 2.** VP induces apoptosis of HL-60 cells. HL-60 cells were treated with DMSO or 10 μM VP for 24 h. The rate of apoptosis was tested by FCM. Data are expressed as means  $\pm$  SD. \*P < 0.05.



**Supplementary Figure 3.** VP alters the protein expression levels. NB4 cells were treated with DMSO or 10  $\mu$ M VP for 24 h. We show the full-length western blots (the left lane: DMSO treatment group, the right lane: VP treatment group), and the arrow indicates the location of the protein. The protein expression levels were determined by western blot.