

## **Supplementary Figures/Tables**

**Supplementary Figure 1.** The threshold cycle (Ct) values of indicated microRNAs of blood samples collected in sampling tubes containing different anti-coagulants from same individuals (N=4) were plotted. Data were shown as mean  $\pm$  SEM.

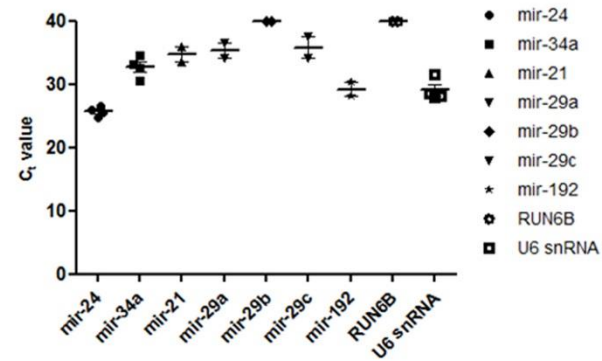
**Supplementary Figure 2.** The threshold cycle (Ct) values of candidate microRNAs and U6 snRNA of all samples were plotted and data were shown as mean  $\pm$  SEM.

**Supplementary Figure 3.** Pearson's correlation coefficient analysis showed no significant association between serological miR level and age in T2DM patients. The X-axis represented age and the Y-axis referred to the relative miR level (versus U6 snRNA).

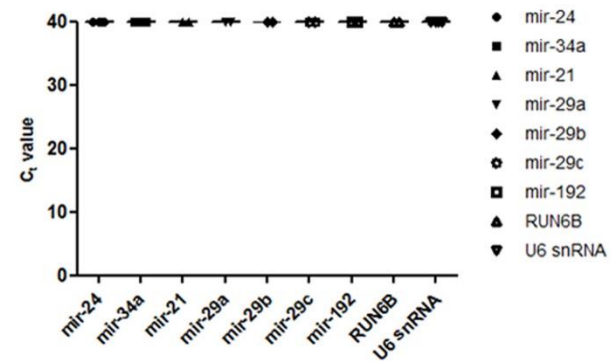
**Supplementary Figure 4.** Pearson's correlation coefficient analysis showed no significant association between serological miR level and Glucose AC levels in T2DM patients. The X-axis represented Glucose AC levels and the Y-axis referred to the relative miR level (versus U6 snRNA).

**Supplementary Table 1.** Information of primers used in this study.

### A. Purple sampling tube (containing EDTA)



### B. Green sampling tube (containing Sodium heparin)



### C. Red sampling tube (without anti-coagulant)

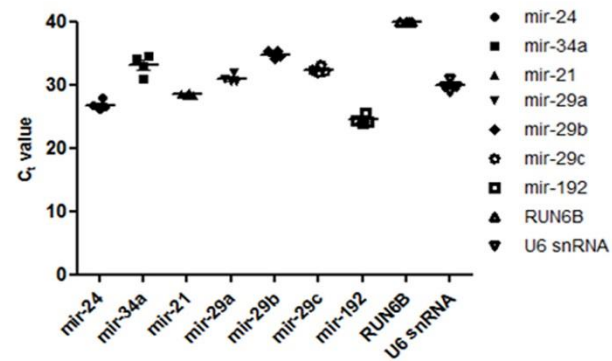
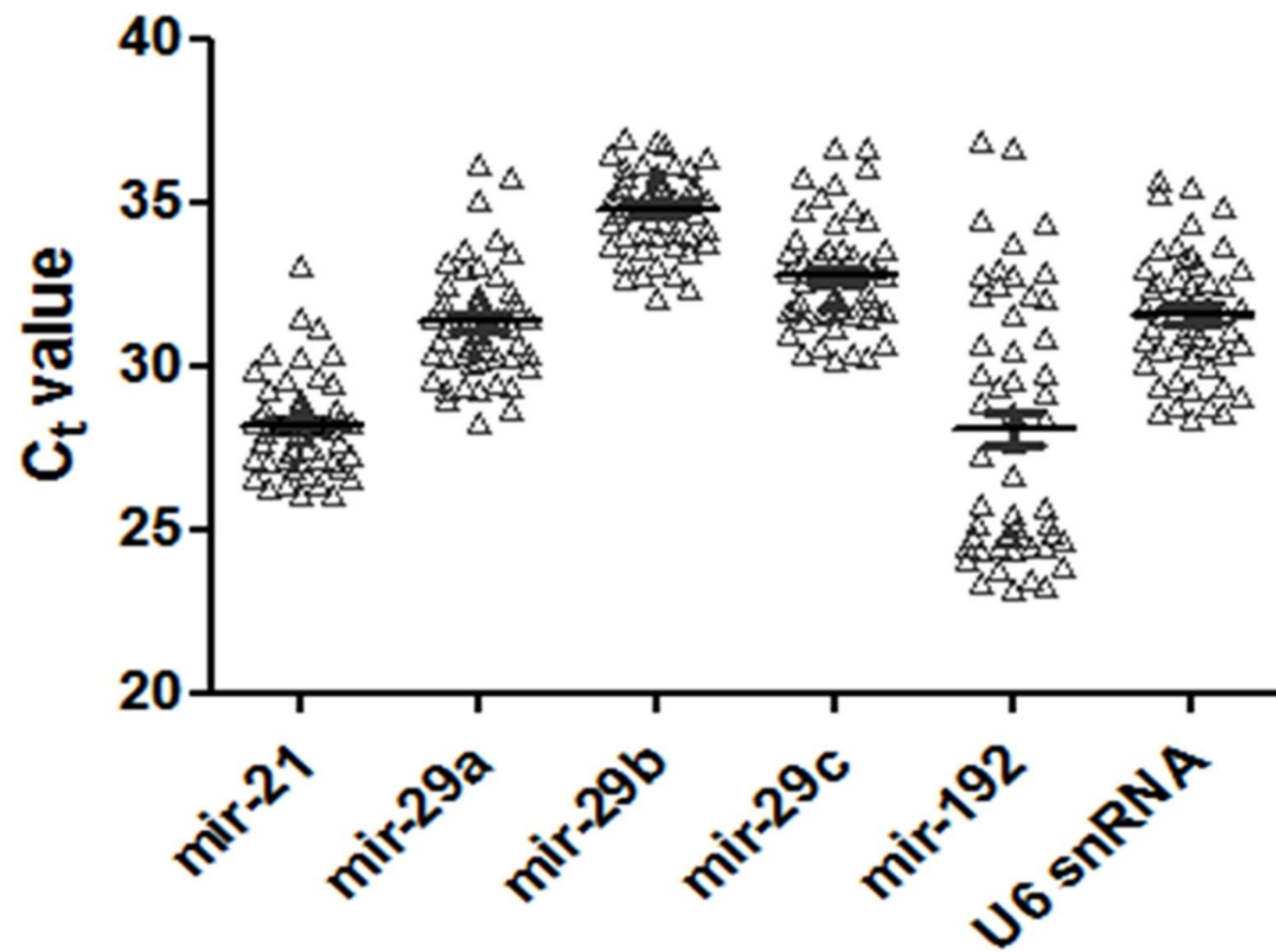
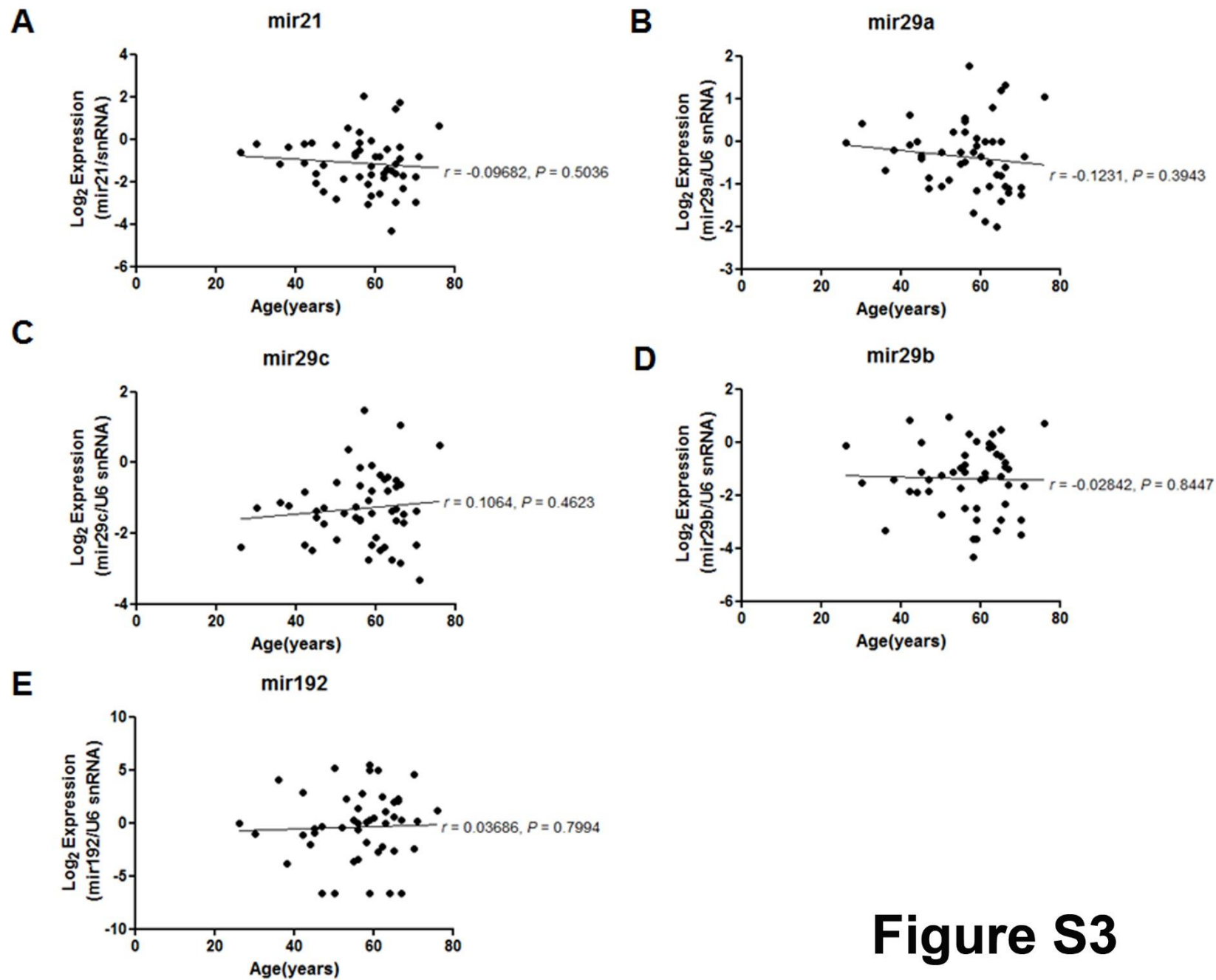


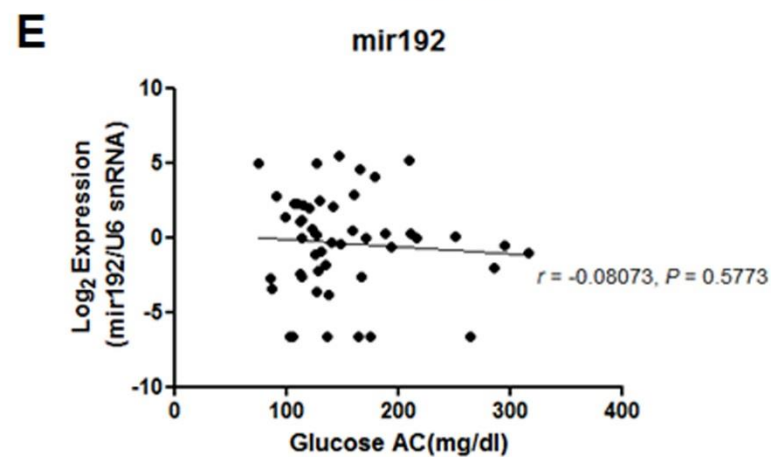
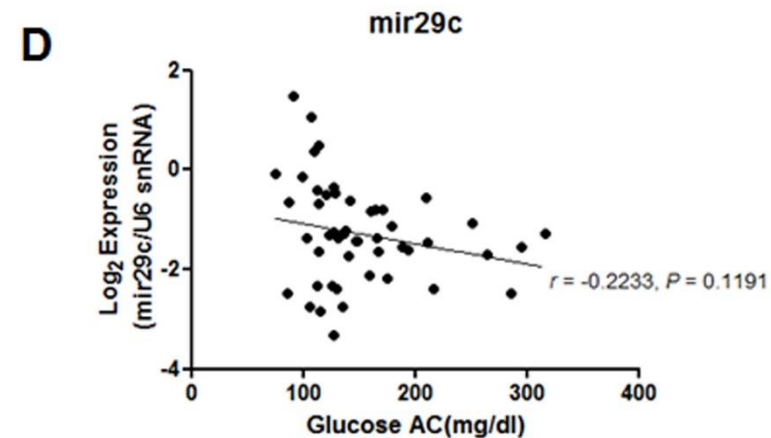
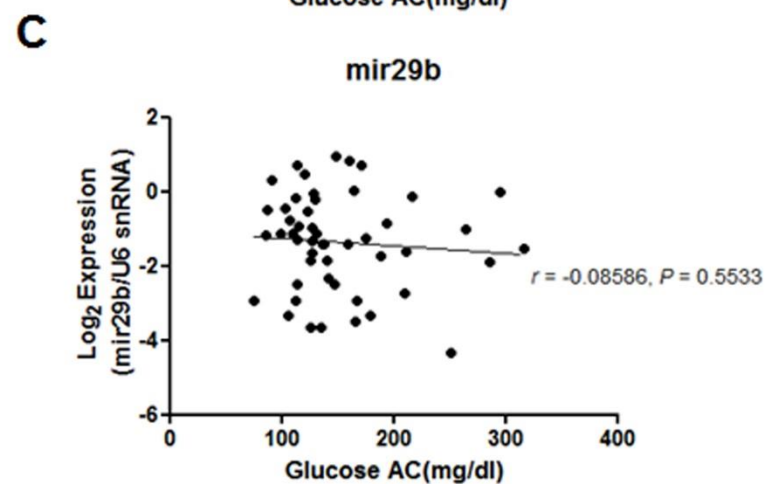
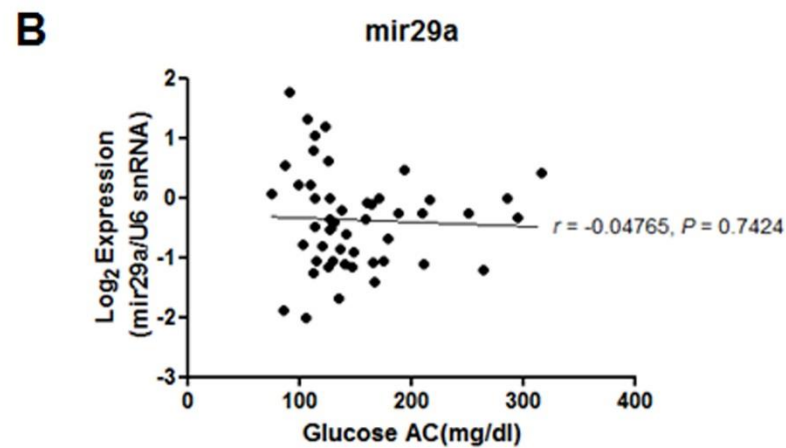
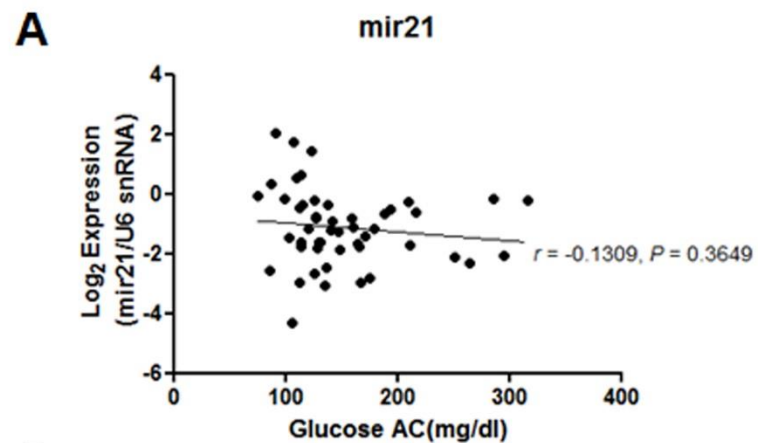
Figure S1



**Figure S2**



**Figure S3**



**Figure S4**

<b>Assay name</b>	<b>miRBase ID</b>	<b>Assay type</b>	<b>Species</b>	<b>Mature miRNA sequence</b>	<b>Assay ID</b>
<b>hsa-miR-21</b>	hsa-miR-21-3p	Mature microRNA	Human	CAACACCAGUCGAUGGGGCUGU	2438
<b>hsa-miR-29a</b>	hsa-miR-29a-3p	Mature microRNA	Human	UAGCACCAUCUGAAAUCGGUUA	2122
<b>hsa-miR-29b</b>	hsa-miR-29b-3p	Mature microRNA	Human	UAGCACCAUUUGAAAUCAGUGUU	413
<b>hsa-miR-29c</b>	hsa-miR-29c-3p	Mature microRNA	Human	UAGCACCAUUUGAAAUCGGUUA	587
<b>hsa-miR-192</b>	hsa-miR-192-3p	Mature microRNA	Human	CUGCCAAUUCCAUAGGUCACAG	2272
<b>U6 snRNA</b>	NR_004394	Control microRNA	Human Mouse Rat	No sequence provided	1973

**Table S1**