

Secretion of *N*- and *O*-linked Glycoproteins from 4T1 Murine Mammary Carcinoma Cells

**Wai-Mei Phang¹, Aik-Aun Tan², Subash C.B. Gopinath^{3,4}, Onn H. Hashim⁵,
Lik-Voon Kiew⁶ and Yeng Chen^{1,7*}**

¹Department of Oral Biology & Biomedical Sciences, Faculty of Dentistry, University of Malaya, Kuala Lumpur 50603, Malaysia. Email: pwm_y5@hotmail.com

²Institute for Research in Molecular Medicine (INFORMM), Universiti Sains Malaysia, Penang 11800, Malaysia. Email: aikaun@yahoo.com

³Institute of Nano Electronic Engineering (INEE) & ⁴School of Bioprocess Engineering, Universiti Malaysia Perlis, Kangar, Perlis, Malaysia. Email: subash@unimap.edu.my

⁵Department of Molecular Medicine, Faculty of Medicine, University of Malaya, Kuala Lumpur 50603, Malaysia. Email: onnhashim@um.edu.my

⁶Department of Pharmacology, Faculty of Medicine, University of Malaya, Kuala Lumpur 50603, Malaysia. Email: lvkiew@um.edu.my

⁷Oral Cancer Research and Coordinating Centre, Faculty of Dentistry, University of Malaya, Kuala Lumpur 50603, Malaysia. Email: chenyeng@um.edu.my

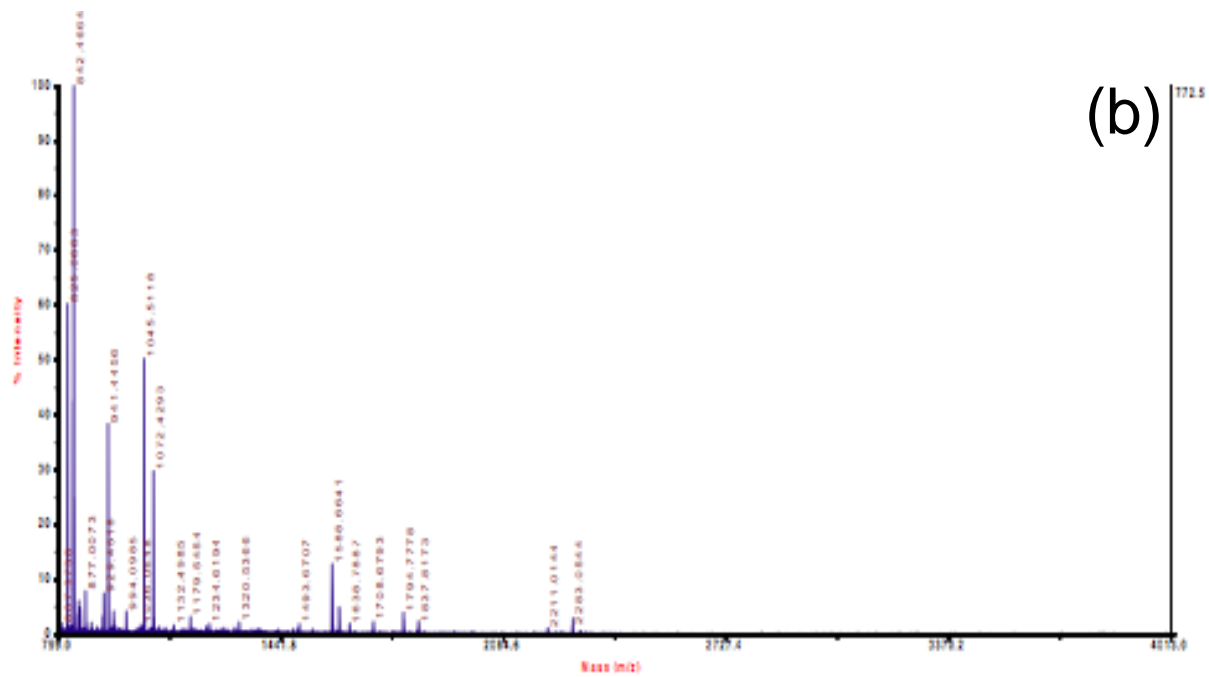
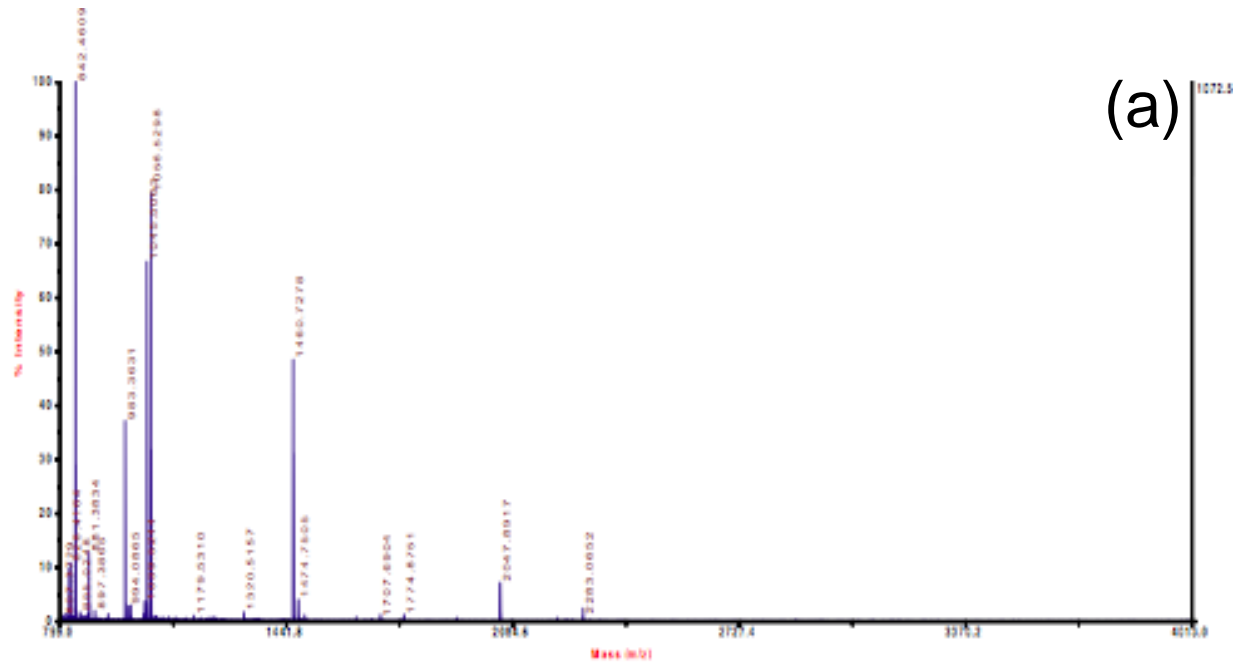


Figure S1

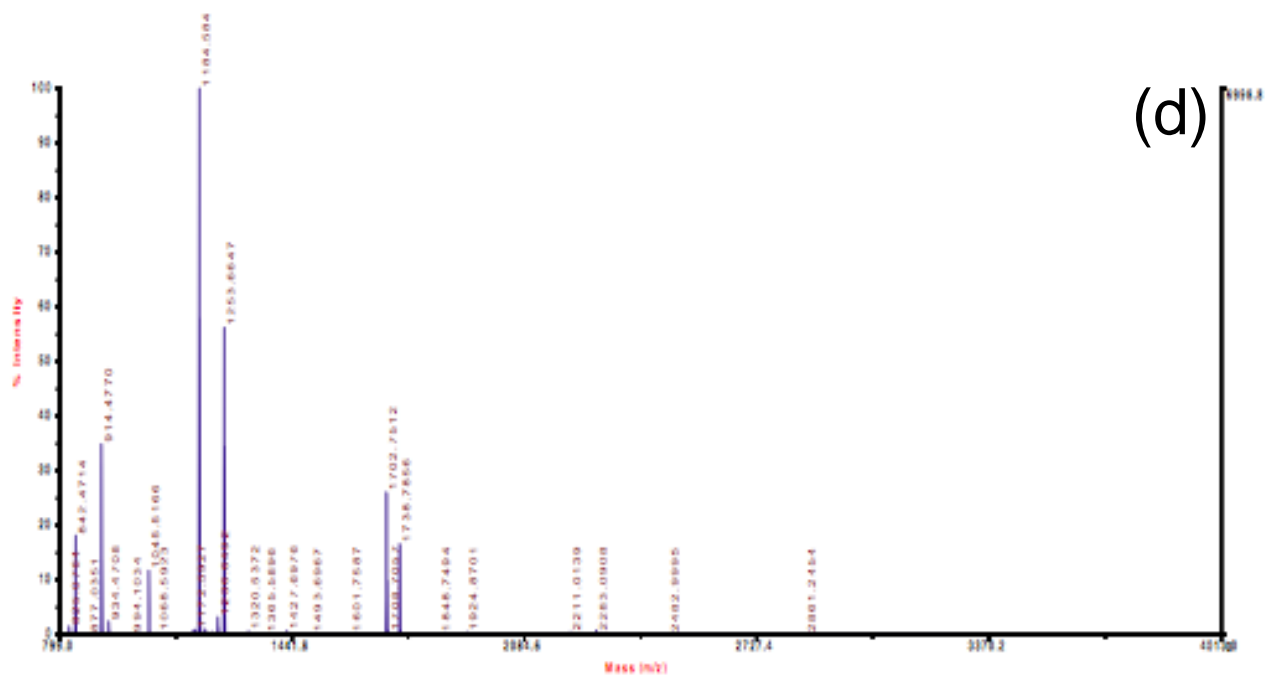
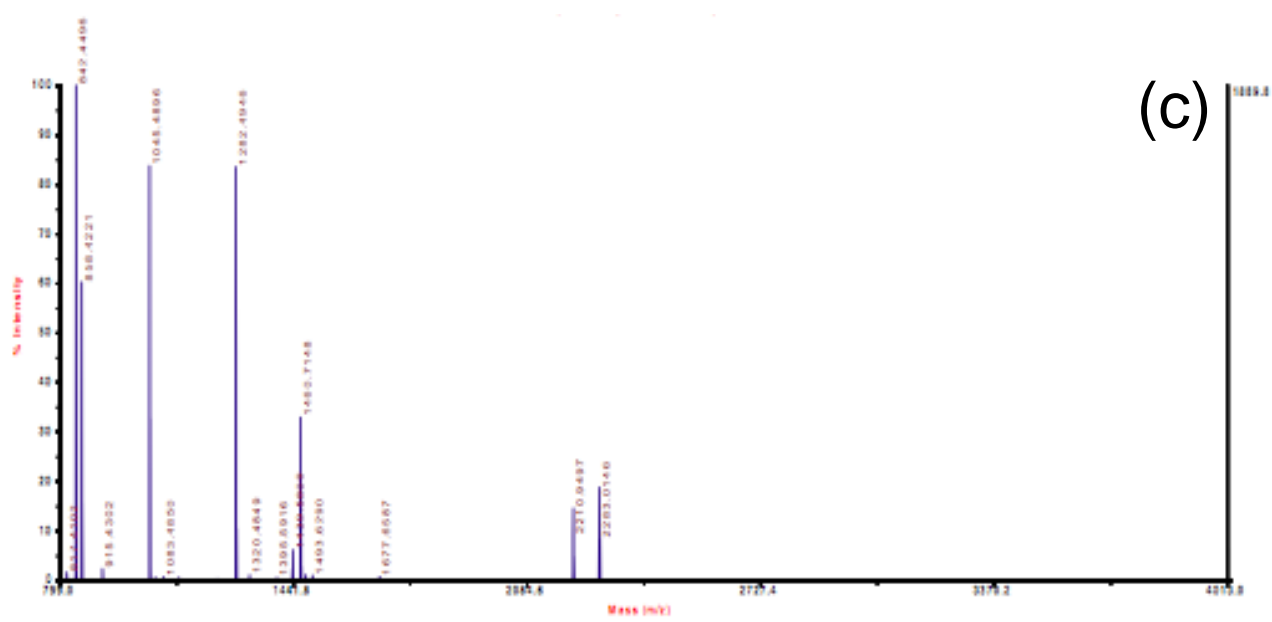


Figure S1

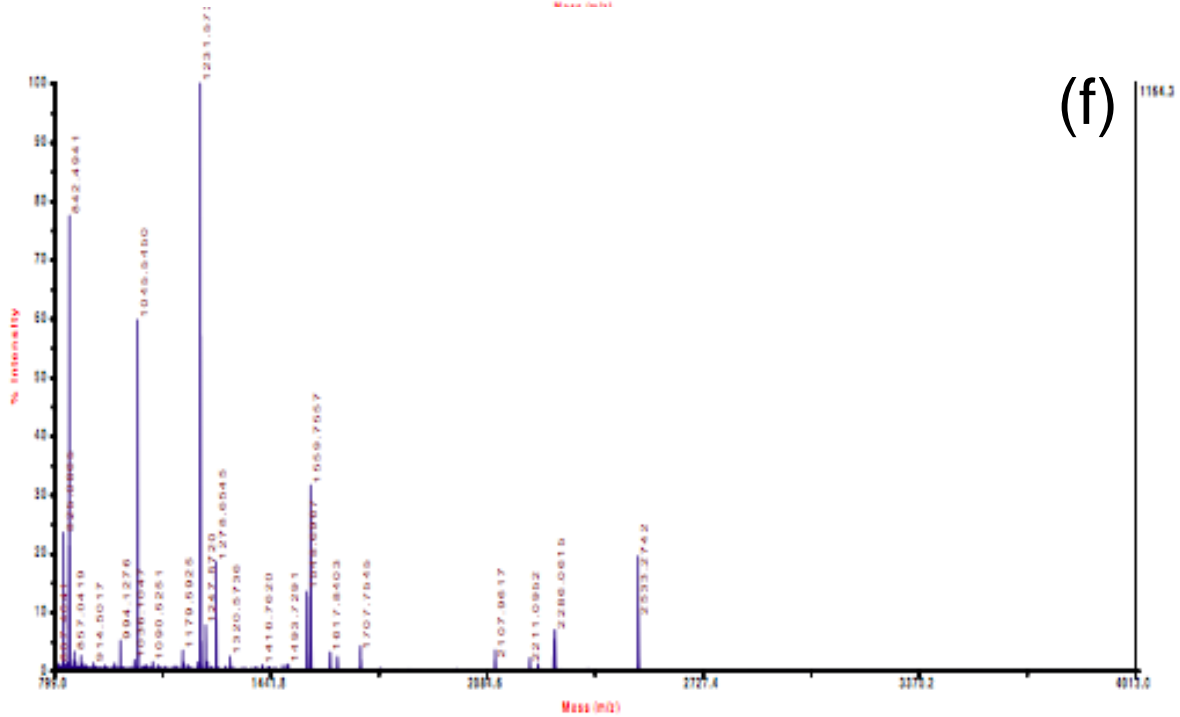
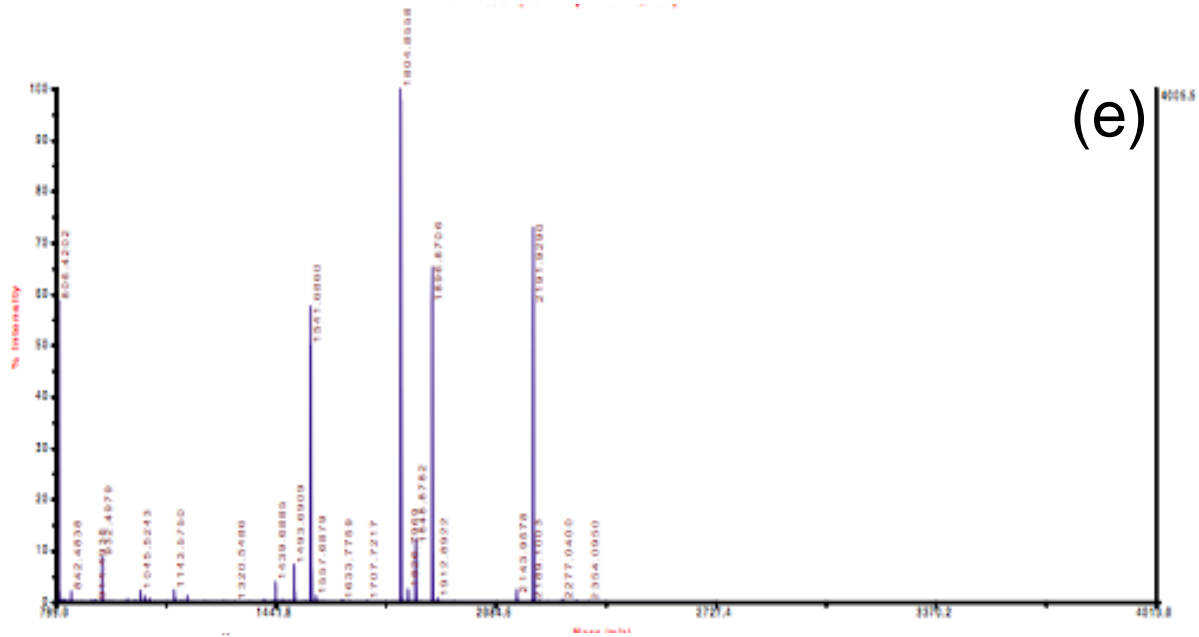


Figure S1

Supporting Figure legends

Figure S1

Mass spectra of the tryptic peptides derived from the 4T1 and MM3MG growth media. The identities of (a) Cadherin-1 (CDH), (b) Collagenase 3 Preproprotein (MMP-13), (c) Viral envelope protein G7e (VEP), (d) Gag protein (GAG), (e) Hypothetical Protein LOC433182 (LOC) and (f) Pigment epithelium-derived factor precursor (PEDF) were confirmed with an ABI 4800 proteomics analyzer MALDI-TOF/TOF mass spectrometer. The analysis was performed in reflectron mode.