
1 **Circulating Osteoprotegerin Levels Independently Predict All-cause Mortality In**
2 **Patients With Chronic Kidney Disease: A Meta-analysis**

3 **Authors and emails:**

4 Qing-xiu Huang^{1#}, hqingx@mail2.sysu.edu.cn

5 Jian-bo Li^{2, 3#}, edmend2010@163.com

6 Xiao-wen Huang⁴, hxiaow3@mail2.sysu.edu.cn

7 **Lan-ping Jiang², fuzhi626@126.com**

8 Lin Huang¹, zyyhuanglin@126.com

9 Hai-wen An¹, anhaiwen1@163.com

10 Wen-qin Yang¹, yangwenqin2004@163.com

11 Jie Pang¹, pangminyi150113@sina.com

12 Yan-lin Li^{1*}, li.yan.lin@126.com

13 Feng-xian Huang^{2*}, hfxyl@163.net

14 *¹Department of Nephrology, Zhongshan Hospital of Traditional Chinese Medicine,*
15 *Affiliated to Guangzhou University of Chinese Medicine, Zhongshan, People's*
16 *Republic of China;*

17 *²Department of Nephrology, The First Affiliated Hospital, Sun Yat-sen University,*
18 *Guangzhou, People's Republic of China;*

19 *³Key Laboratory of National Health Commission of the People's Republic of China;*

20 *⁴Department of Ultrasonography, Zhongshan Hospital of Traditional Chinese*
21 *Medicine, Affiliated to Guangzhou University of Chinese Medicine, Zhongshan,*
22 *People's Republic of China*

23 [#]Qing-xiu Huang and Jian-bo Li contributed equally to this work.

24 ***Corresponding Author:**

25 **Feng-xian Huang,**

1 Department of Nephrology, The First Affiliated Hospital, Sun Yat-sen University, 58th,
2 Zhongshan Road II, Guangzhou 510080, People's Republic of China.

3 Phone: +86-20 87755766; Fax: +86-20 87769673

4 E-mail: hfxyl@163.net

5

6 **Yan-lin Li,**

7 Department of Nephrology, Zhongshan Hospital of Traditional Chinese Medicine,
8 Affiliated to Guangzhou University of Chinese Medicine, 3rd, Kangxin Road,
9 Zhongshan, 528400, People's Republic of China.

10 Phone and Fax: (0760)89980769

11 Email: li.yan.lin@126.com

12

13

1 Circulating Osteoprotegerin Levels Independently Predict All-cause Mortality In

2 Patients With Chronic Kidney Disease: A Meta-analysis

3 Abstract

4 **Background:** Studies have shown inconsistent results regarding the association
5 between circulating osteoprotegerin (OPG) levels and all-cause mortality in patients
6 with chronic kidney disease (CKD). The aim of this meta-analysis is to investigate the
7 association between circulating OPG levels and all-cause mortality in patients with
8 CKD.

9 **Methods:** The PubMed, EMBASE and Cochrane Library databases were searched for
10 eligible studies investigating the association between circulating OPG levels and
11 all-cause mortality in patients with CKD. Pooled hazard ratios (~~HR~~HRs) and the
12 corresponding 95% confidence intervals (CIs) were calculated using a random effects
13 model.

14 **Results:** In ~~total~~all, 13 studies ~~with~~that included 2,895 patients with CKD were
15 included in this analysis. According to the meta-analysis, patients with the highest
16 circulating OPG level had a significantly higher risk of all-cause mortality (7 studies;
17 the adjusted HR, 1.88; 95% CI, 1.45 — 2.44) compared with patients with the lower
18 circulating OPG level. An increase of 1 pmol/L in the circulating OPG level was
19 associated with a 6% increased risk of all-cause mortality (7 studies; the adjusted HR,
20 1.06; 95% CI, 1.03–1.10). ~~Subgroup~~A subgroup analysis by dialysis methods
21 suggested that an elevated circulating OPG level was independently associated with
22 all-cause mortality in ~~only~~the HD only population.

23 **Conclusion:** Elevated circulating OPG levels independently predict an increased risk
24 of all-cause mortality in patients with CKD, especially in ~~only~~the HD only population.

25 **Key words:** osteoprotegerin; all-cause mortality; chronic kidney disease;

1 meta-analysis

2

3 **Introduction**

4 Chronic kidney disease (CKD) is an increasing global public health issue.
5 Currently, the literature has reported an estimated prevalence of CKD of 10.8–13.6%
6 in adults [1-3]. Patients with CKD ~~demonstrated~~ demonstrate a higher risk of mortality
7 than the general population [4]. Previous studies ~~have~~ identified many risk factors for
8 mortality in CKD patients, such as smoking, anaemia, left ventricular hypertrophy and
9 high blood pressure [5-7]. In addition, ~~there are some~~ published ~~researches~~
10 ~~suggesting~~ research has suggested the potential value ~~for of~~ other nontraditional risk
11 factors including ~~the~~ circulating osteoprotegerin (OPG) levels [8-10].

12 OPG is a soluble tumour necrosis factor (TNF) superfamily receptor [11]. It
13 inhibits the actions of the ~~cytokines~~ cytokine receptor activator of nuclear factor
14 kappa-B ligand (RANKL) and TNF-related apoptosis-inducing ligand (TRAIL) by
15 preventing their binding to ~~signalings~~ signalling receptors in the cell membrane [12].
16 Inhibition of the RANK/ TRAIL pathway results in less osteoclast differentiation as
17 well as reduced activation and survival of mature osteoclasts [13]. OPG is ~~thereby also~~
18 involved in metabolic bone disease, ~~which and~~ plays a potential role in ~~the~~ prognosis
19 of CKD [14]. Several ~~studies~~ [8, 9], but not all [15, 16] ~~studies~~, have suggested a
20 significant association between OPG levels and all-cause mortality in patients with
21 CKD. ~~There~~ However, there is conflicting evidence ~~about as to~~ whether ~~an~~ elevated
22 circulating OPG level is an independent risk factor for all-cause mortality in
23 participants with CKD.

24 We hypothesized that an elevated circulating OPG level was an independent
25 predictor of all-cause mortality in patients with CKD. Therefore, we performed a

1 qualitative and quantitative meta-analysis of all available studies that reported the
2 association of OPG levels with all-cause mortality in patients with CKD.

3 **Method**

4 *Literature search*

5 This meta-analysis was conducted in accordance with the Preferred Reporting
6 Items for Systematic Reviews and Meta-Analyses (PRISMA) statement and is
7 registered with the International Prospective Register of Systematic Reviews (number
8 CRD42018092797) [17].

9 We searched for relevant studies published between January 1970 and December
10 2018 in the PubMed, EMBASE and Cochrane Library databases. We used the search
11 terms "osteoprotegerin" and "kidney". The complete search used for PubMed was:
12 ("Osteoprotegerin"[Mesh] OR "Osteoprotegerin" [All Fields] OR "OPG" [All Fields]
13 OR "OCIF Protein" [All Fields] OR "Osteoclastogenesis Inhibitory Factor" [All
14 Fields] OR "Tumor Necrosis Factor Receptor 11b" [All Fields]) AND ("Renal" [All
15 Fields] OR "Kidney" [All Fields] OR "Dialysis" [All Fields] AND ("Mortality" [All
16 Fields] OR "death" [All Fields] OR "survival" [All Fields] OR "prognosis" [All Fields]
17 OR "outcome" [All Fields]). We also performed a manual search using the reference
18 lists of key articles published in English. The search process was performed and
19 confirmed by two investigators (Q.X.H. and J.B.L.).

20 *Study Research selection*

21 We regarded studies as eligible if they met all the following criteria: (1)
22 circulating OPG levels were measured at ~~the~~ baseline; (2) all-cause mortality was the
23 main outcome; (3) the studies enrolled adult patients with CKD, which was defined
24 according to the KDOQI guideline [18]; and (4) the studies had available data on
25 adjusted hazard ratios (HRs) and their corresponding 95% confidence intervals (CIs)

(or provided the data needed to calculate them) for all-cause mortality associated with a 1 pmol/L increase in the circulating OPG level or they compared high and low circulating OPG levels. The circulating OPG level groups were based on the definitions used in each study. No restriction was made with regard to language, and published abstracts were also considered. Two reviewers (X.W.H. and L.H.) independently screened the studies ~~to select and~~ selected the articles. ~~A In cases of disagreement, a consensus was reached through discussion with the senior author (F.X.H.) in cases of disagreement. Emails were sent to the corresponding.~~ Corresponding authors were emailed to obtain additional data for the eligible articles if the relevant data were not reported.

Data extraction and quality assessment

Two investigators (H.W.A. and W.Q.Y.) extracted the following data from each included study using standardized forms: author, publication year, ~~study~~research population, dialysis method, patient number, number of males, age of ~~study~~the research population, circulating OPG concentration, follow-up duration and the number of deaths. The most fully adjusted HRs with 95% CIs were extracted from all the eligible studies. ~~One senior author (L.P.J.) supervised the entire data extraction process.~~ The quality of the studies was evaluated by consensus between the two investigators (J.P. and Y.L.L.) in accordance with the Newcastle-Ottawa Scale (NOS) (maximum score, 9) [19]. The overall ~~study~~research quality was defined as poor (score 0–3), fair (score 4–6), or high (score 7–9).

Statistical analysis

The relationship between circulating OPG levels and all-cause mortality was summarized by considering circulating OPG not only as a categorical variable (comparing the highest to the lower circulating OPG levels) but also as a continuous

1 variable (investigating the change in all-cause mortality for every 1 pmol/L increase in
2 the level of circulating OPG). Each HR was transformed to its natural logarithm (log
3 HR), and the variance for each log HR was calculated from its corresponding 95% CI.
4 Random effects models were used to obtain the pooled log HR, and the overall HR
5 and its 95% CI were calculated by exponentiation of the pooled log HR [20].

6 We used Stata (version 12.0) for all statistical analyses. Statistical tests were
7 two-sided and used a significance level of $p < 0.05$. We used the Cochran Q test to
8 assess heterogeneity ~~between~~among studies [21]. We also performed the I^2 test to
9 assess the magnitude of the heterogeneity between studies, with values $\leq 40\%$, 40 —
10 75% and $\geq 75\%$ regarded as indicating low, moderate and high degrees of
11 heterogeneity, respectively [21-23]. ~~Subgroup~~A subgroup analysis was conducted to
12 assess the ~~effect~~effects between ~~population~~populations that underwent different
13 dialysis methods. A sensitivity analysis was performed to explore the impact of each
14 individual study by ~~deleting~~removing one study ~~each~~at a time.

15 Results

16 *Literature search and study characteristics*

17 In ~~total~~all, 876 non-duplicated potential studies were identified, and 13—~~studies~~
18 [8-10, 15, 24-32] were finally included in the meta-analysis (**Fig. 1**). Seven studies
19 [24, 26-28, 30-32] were included in a qualitative meta-analysis to assess the
20 association of ~~the~~ circulating OPG level, as a categorical variable, with all-cause
21 mortality. Seven studies [8-10, 15, 25, 27, 29] were included in a quantitative
22 meta-analysis to assess the association of a 1 pmol/L increase in the circulating OPG
23 level with all-cause mortality. The ~~publication years of the~~eligible studies ~~ranged~~were
24 ~~published~~ from 2006 to 2018. The characteristics and quality scores of the included
25 studies are displayed in **Table 1**. In total, 2,895 individuals were included, and 1,257

1 deaths were recorded. All studies were considered to have fair (scale of 5–6) to high
2 (scale of 7–9) quality. –

3

4

Table 1 Characteristics of 13 studies/researches included in the meta-analysis

Author, year	Population	Dialysis method	Patients (n)	Male (n)	Age (years)	Osteoprotegerin (OPG)	Follow-up	Death (n)	Comparison	Adjusted HR (95% CI)	Quality score
Krzanowski, 2018[24]	Poland, stage 5	HD and PD non-dialysis	59	38	61 ± 16	median, 7.55 pmol/L	5 years	25	high vs. low (> median vs. ≤ median)	5.04 (1.40, 18.18)	6
Collado, 2017[26]	Spain, ESRD	HD	220	154	61.1 ± 6.1	8.78 (6.07–12.95) pmol/L	63.2 ± 1.91 years	74	high vs. low (Tertile 3 vs. Tertile 1)	1.96 (1.12, 3.41)	7
Krzanowski, 2017[25]	Poland, stage 5	HD and PD non-dialysis	78	46	NA	NA	5 years	27	per 1 pmol/L	1.07 (0.97, 1.19)	7
Kuzniewski, 2016[8]	Poland	HD	69	39	60 ± 12	13.33 (10.53–17.38) pmol/L	7 years	39	per 1 pmol/L	1.08 (1.02, 1.14)	6
Alderson, 2016[9]	CRISIS, stage 3-5	non-dialysis	463	286	63.8 ± 14.1	7.87 ± 3.28 pmol/L	46 (21 - 69) months	217	per 1 pmol/L	1.06 (1.01, 1.12)	6
Scialla, 2014[27]	CHOICE, ESRD	HD and PD	602	320	57.8 ± 14.9	10.9 (8.0–15.3) pmol/L	13.3 years	423	high vs. low (3 rd tertile vs. 1 st tertile)	1.27 (0.89, 1.80)	7
Nascimento, 2014[10]	Brazil, stage 3-5	non-dialysis, HD and PD	145	88	median, 61	8.9 (1.89–33.2) pmol/L	3 years	40	per 1 pmol/L	1.07 (1.01, 1.13)	8
Winther, 2013[28]	Denmark, with established CVD	HD	206	133	67 ± 12	5.52 ± 3.18 ng/L	2 years	90	high vs. low (3 rd tertile vs. 1 st tertile)	1.94 (1.05, 3.56)	6
Janda, 2013[15]	Poland	PD	55	30	53 ± 13	NA	6 years	22	per 1 pmol/L	1.08 (0.96, 1.22)	7
Nakashima, 2011[29]	Japan	HD	151	85	62.1 ± 13.4	10.5 (7.3–15.1) pmol/L	6 years	40	per 1 pmol/L	1.12 (1.05, 1.19)	7

Matsubara, 2009[30]	Sweden, stage 5	HD and PD	265	165	53 ± 10	median, pg/mL	2,035	5 years	84	high vs. low (> median vs. ≤ median)	1.96 (1.22, 3.15)	7
Jorsal, 2008[31]	Denmark, T1DM with nephropathy	non-dialysis	397	243	42.1 ± 10.6	3.0 (1.4–11.4) ng/mL		11.3 (0–12.9) years	126	high vs. low (4 th quartile vs. 1 st quartile)	3.00 (1.24, 7.27)	7
Morena, 2006[32]	France	HD	185	93	median, 66.7	median, pg/ml	1894.2	2 years	50	high vs. low (3 rd tertile vs. 2 nd tertil)	2.20 (1.06, 4.56)	7

OPG, osteoprotegerin; HR, hazard ratio; CI, confidence interval; HD, hemodialysis; PD, peritoneal dialysis; NA, data was not reported; CRISIS, The Chronic Renal Insufficiency Standards Implementation Study; CHOICE, Choices for Healthy Outcomes In Caring for ESRD study; ESRD, end-stage renal disease; CVD, cardiovascular disease; T1DM, type 1 diabetic mellitus

1 **Table 1 (continued)**

Author, year	Confounding variables
Krzanowski, 2018[24]	Dialysis status, Framingham risk score, atherosclerotic plaques in CCA
Collado, 2017[26]	Age, Charlson Comorbidity Index, smoking, albumin, IL-18, Troponin I
Krzanowski, 2017[25]	Age, dialysis status, pentraxin 3, high-sensitivity CRP
Kuzniewski, 2016[8]	Dialysis duration, sex, diabetes mellitus, hypertension, smoking, LDL-cholesterol, CRP, albumin, PTH and Ca x Pi
Alderson, 2016[9]	Age, sex, creatinine, prior cardiovascular event, heart failure at baseline, diabetes mellitus, current or former smoker, mean SBP, Pi, Ca, albumin, haemoglobin, PTH, FGF-23, fetuin-A
Scialla, 2014[27]	Age, sex, race, index of coexistent disease, diabetes mellitus, cardiovascular disease, BMI, Pi, and corrected Ca, albumin, IL-6, CRP, FGF-23
Nascimento, 2014[10]	Age, sex, high-sensitivity CRP, albumin, diabetes mellitus
Winther, 2013[28]	Age, sex, blood pressure, diabetes mellitus, Ca x Pi, albumin, fibrinogen, CRP, adiponectin, treatment with n-3 polyunsaturated fatty acids/placebo
Janda, 2013[15]	Age, FGF-23, coronary arteries calcification score
Nakashima, 2011[29]	Age, sex, dialysis duration, diabetes mellitus, baseline CVD
Matsubara, 2009[30]	Age, sex, diabetes mellitus, CRP, CVD
Jorsal, 2008[31]	Age, sex, smoking, blood pressure, Glycosylated Hemoglobin, GFR, serum cholesterol, UAER, antihypertensive treatment, cardiovascular events at baseline
Morena, 2006[32]	Age, sex, dialysis duration, diabetes mellitus, hypertension, smoking

2 CCA, common carotid artery; CRP, C-reactive protein; LDL, low density lipoprotein; PTH,
3 parathyroid hormone; Ca, calcium; Pi, phosphate; SBP, systolic blood pressure; FGF-23, fibroblast
4 growth factor-23; BMI, body mass index; CVD, cardiovascular disease; GFR, glomerular filtration rate;
5 UAER, urinary albumin excretion rate
6

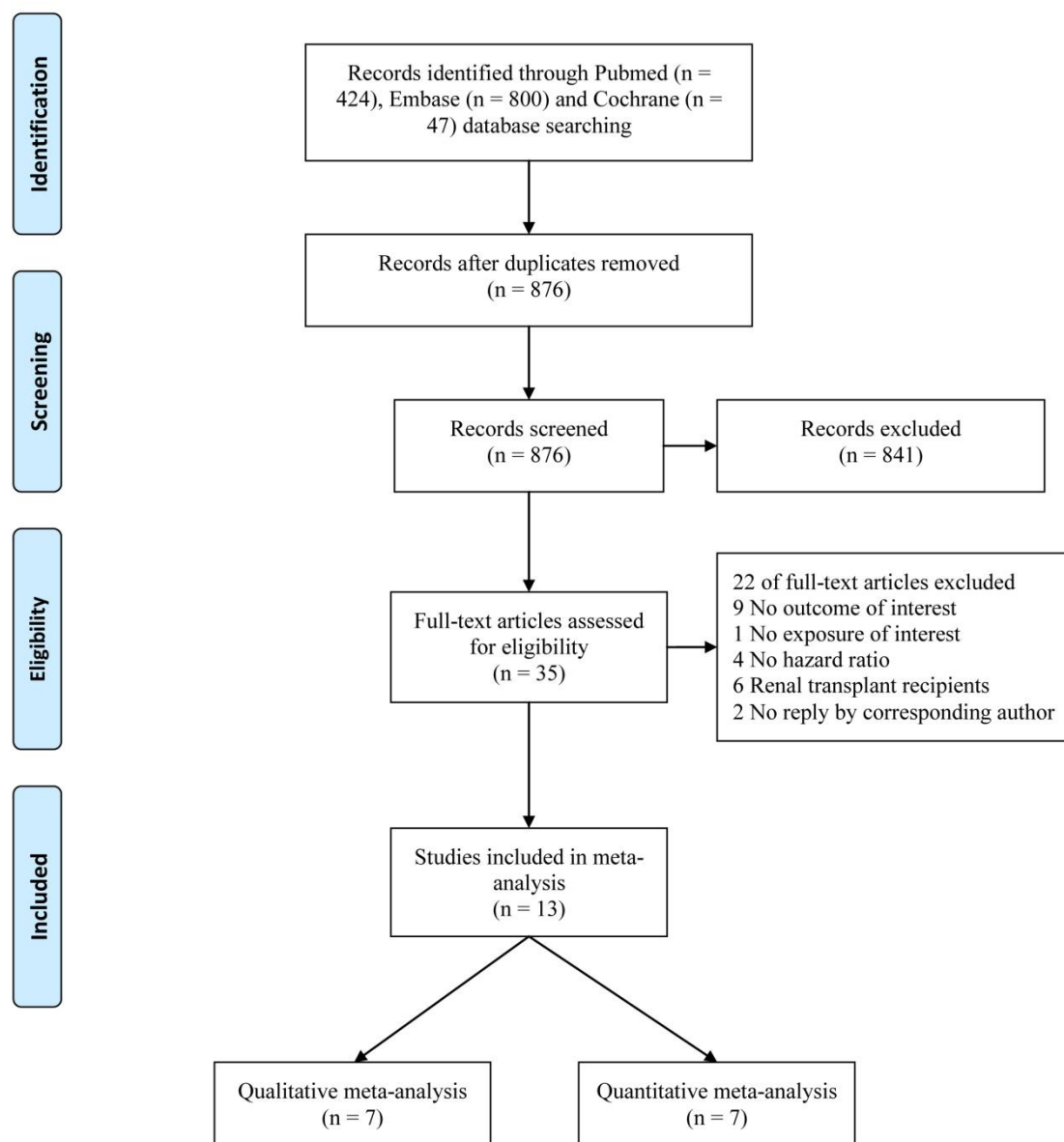
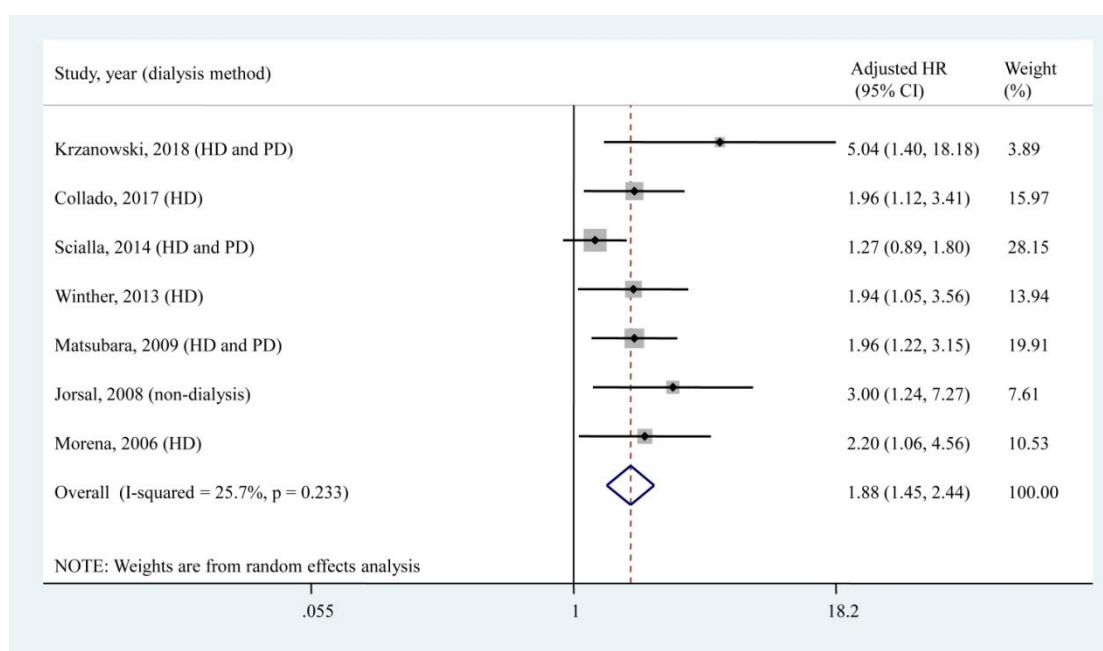


Fig. 1 Flow chart of study selection

Association of *the circulating OPG level, as a categorical variable, with all-cause mortality*

Seven studies [24, 26-28, 30-32], which included a total of 1,934 patients, reported the adjusted HR of all-cause mortality for the highest OPG level group compared ~~to~~with the lower OPG level group. According to the qualitative meta-analysis, patients with *the* highest OPG levels had a significantly higher risk of all-cause mortality (adjusted HR, 1.88; 95% CI, 1.45 — 2.44) compared ~~to~~with

1 patients with lower OPG levels, ~~with~~ and low heterogeneity ($I^2 = 25.7\%$, $P = 0.233$)
 2 was found ~~between~~ among studies (Fig. 2).



3

4 **Fig. 2 Forest plot for the association of the circulating OPG level as a categorical variable**
 5 **with all-cause mortality.** HD, ~~hemodialysis~~ haemodialysis; PD, peritoneal dialysis; HR, hazard
 6 ratio; CI, confidence interval. The point estimates of adjusted HRs for each study are shown as
 7 solid boxes, and the size of each solid box indicates its weight in the analysis. Error bars are 95%
 8 CIs. The summary results are shown as solid prisms. 95% CIs are presented as the error bars or the
 9 width of the prisms²-width. The summary adjusted HR was 1.88 (1.45, 2.44), with low
 10 heterogeneity ($I^2 = 25.7\%$, $P = 0.233$).

11

12 Of the 7 included studies, 2 ~~studies~~ compared the high ~~to~~ and low OPG levels
 13 according to the median value [24, 30], 3 ~~studies~~ compared the 3rd tertile of the OPG
 14 level to the 1st tertile [26-28], and 1 ~~study~~ compared the 4th tertile of the OPG level to
 15 the 1st tertile [31]. ~~Above~~ The 6 studies mentioned above set the lowest OPG level as
 16 the reference to assess the association between the highest OPG level and all-cause
 17 mortality. Only 1 study [32] set the middle OPG level (2nd tertile) as the reference and
 18 found a significant increase in all-cause mortality associated with the highest OPG

level (3rd tertile, the adjusted HR, 2.20; 95% CI, 1.06 — 4.56) and ~~an insignificant~~ nonsignificant association ~~of~~with the lowest OPG level (1st tertile, the adjusted HR, 1.52; 95% CI, 0.63 - 3.69).

SubgroupA subgroup analysis was conducted according to different dialysis methods (Fig. 3). The pooled HR of each subgroup demonstrated a significant association between the circulating OPG level and all-cause mortality. ~~Especially~~ Specifically, for the population that underwent only hemodialysis (HD), ~~there was~~ no heterogeneity ($I^2=0$, $P=0.961$) was found ~~between~~among studies.

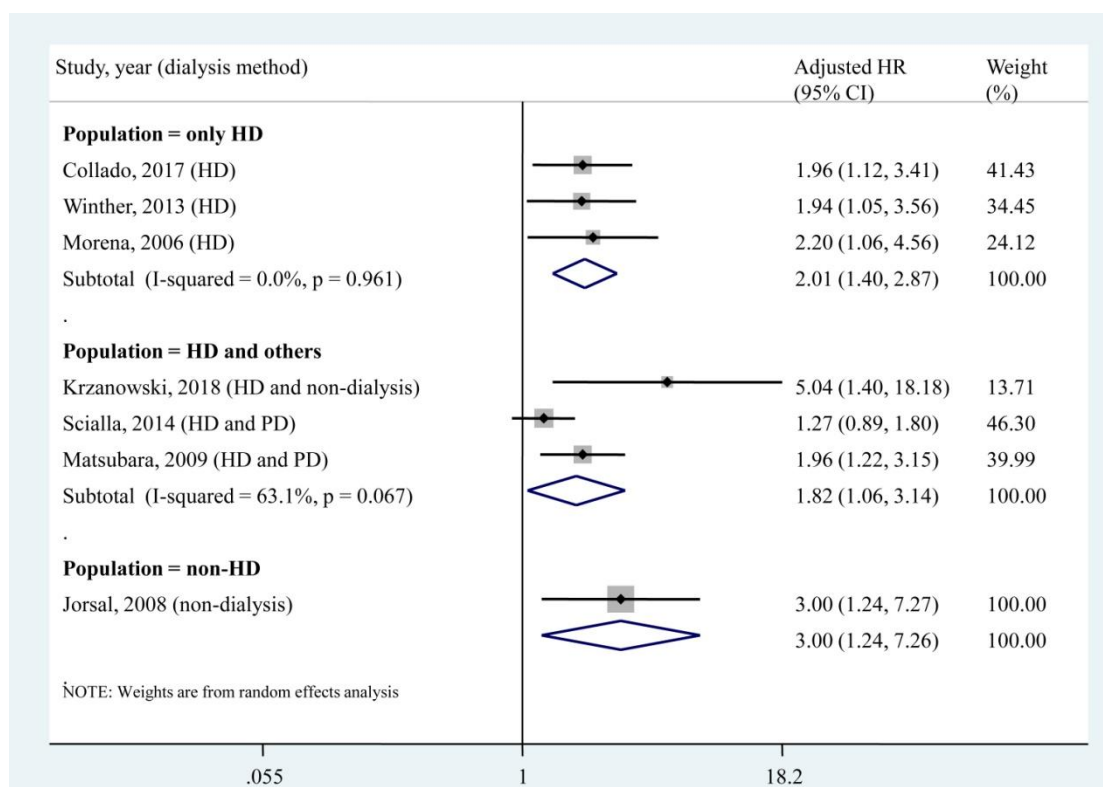
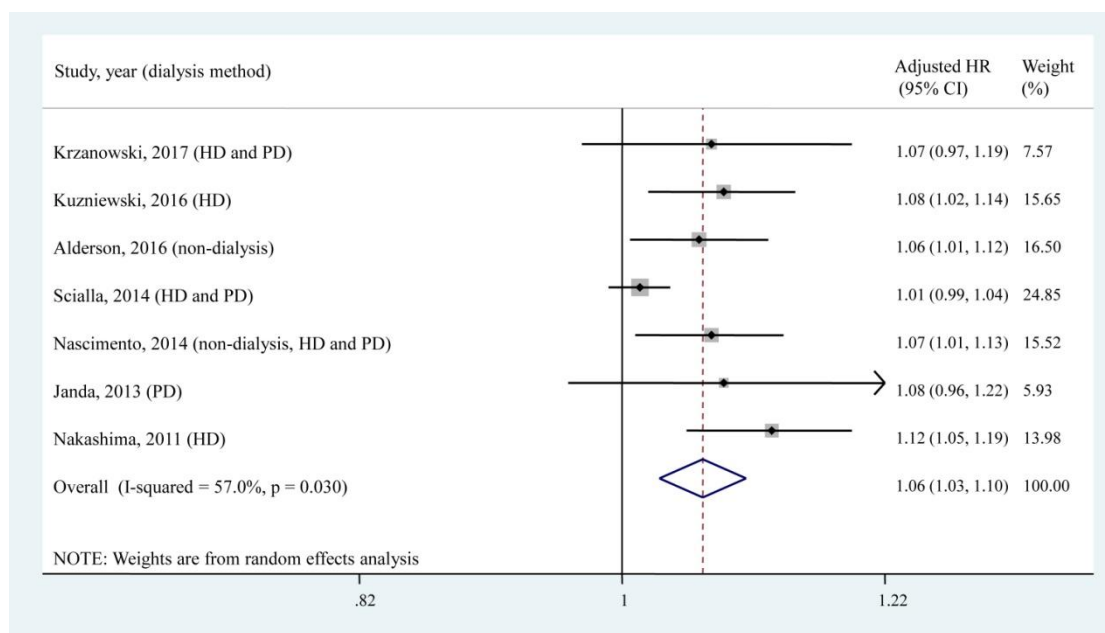


Fig. 3 Subgroup analysis according to dialysis methods for the association of circulating OPG level as a categorical variable with all-cause mortality. HD, hemodialysis; PD, peritoneal dialysis; HR, hazard ratio; CI, confidence interval. The point estimates of adjusted HRs for each study are shown as solid boxes, and the size of each solid box indicates its weight in the analysis. Error bars are 95% CIs. The summary results are shown as solid prisms. 95% CIs are presented as the error bars or width of the prisms. The summary adjusted HR of the HD only population was 2.01 (1.40, 2.87), without heterogeneity ($I^2=0$, $P=0.961$).

1
2 **Association of a 1 pmol/L increase in the circulating OPG level with all-cause**
3 **mortality**

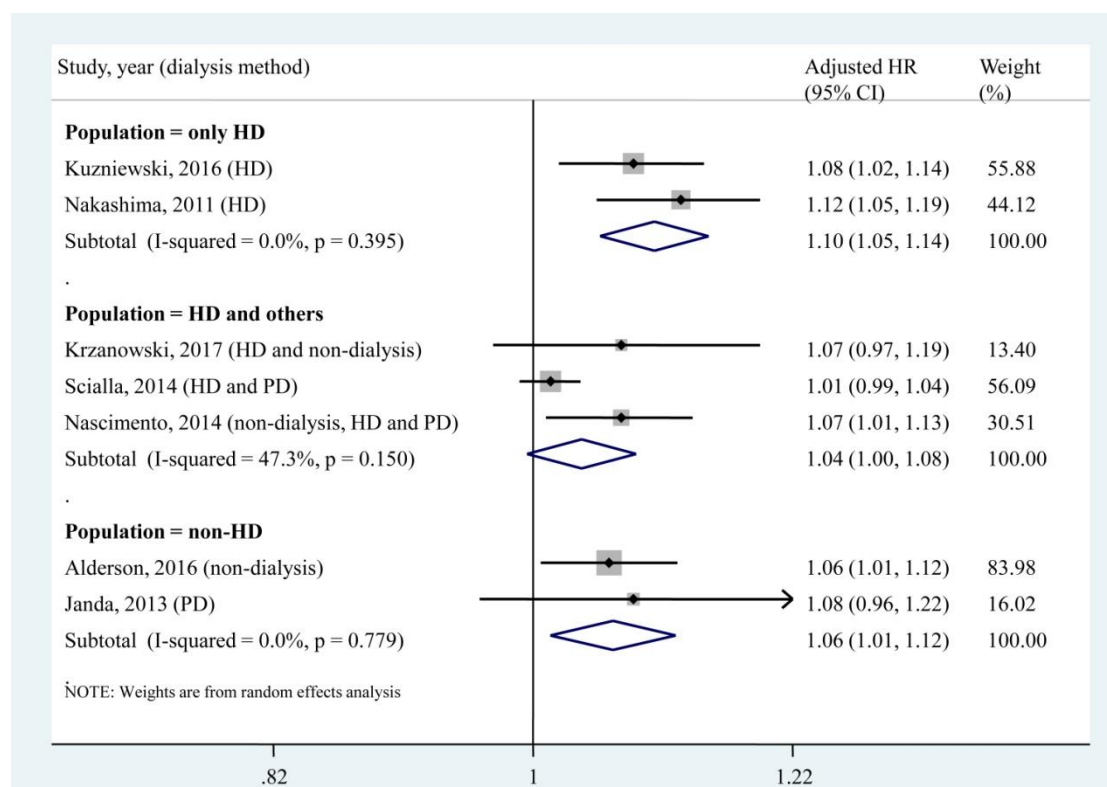
4 Seven studies [8-10, 15, 25, 27, 29], which included a total of 1,563 patients,
5 reported the adjusted HR of all-cause mortality for a 1 pmol/L increase in the
6 circulating OPG level. According to the quantitative meta-analysis, each 1 pmol/L
7 increase in the circulating OPG level was associated with a 6% increased risk of
8 all-cause mortality (adjusted HR, 1.06; 95% CI, 1.03–1.10), ~~with~~ moderate
9 heterogeneity ($I^2 = 57.0\%$, $P = 0.030$) ~~was~~ found ~~between~~ among studies (Fig. 4).



10
11 **Fig. 4 Forest plot for the association of a 1 pmol/L increase in the circulating OPG level with**
12 **all-cause mortality.** HD, ~~hemodialysis~~ haemodialysis; PD, peritoneal dialysis; HR, hazard ratio;
13 CI, confidence interval. The point estimates of adjusted HRs for each study are shown as solid
14 boxes, and the size of each solid box indicates its weight in the analysis. Error bars are 95% CIs.
15 The summary results are shown as solid prisms. 95% CIs are presented as the error bars or ~~width~~
16 ~~of the prisms' width~~. The summary adjusted HR was 1.06 (1.03, 1.10), with moderate
17 heterogeneity ($I^2 = 57.0\%$, $P = 0.030$).

18 **Subgroup** A subgroup analysis was conducted according to different dialysis
19

1 methods (Fig. 5). We found that each 1 pmol/L increase in the circulating OPG level
 2 was significantly associated with increased risk of all-cause mortality in the
 3 population that underwent only HD (2 studies, adjusted HR, 1.10; 95% CI, 1.05–1.14).
 4 ~~however, for population~~ In addition, the pooled estimate of the subgroup including
 5 the HD population and peritoneal dialysis (PD) patients, ~~no significant association~~
 6 ~~was found between each 1 pmol/L increase in the circulating OPG level and all-cause~~
 7 ~~mortality~~ others (adjusted HR, 1.0204; 95% CI, 0.991.00–1.04)–08) was obviously
 8 lower than that of the HD only subgroup.

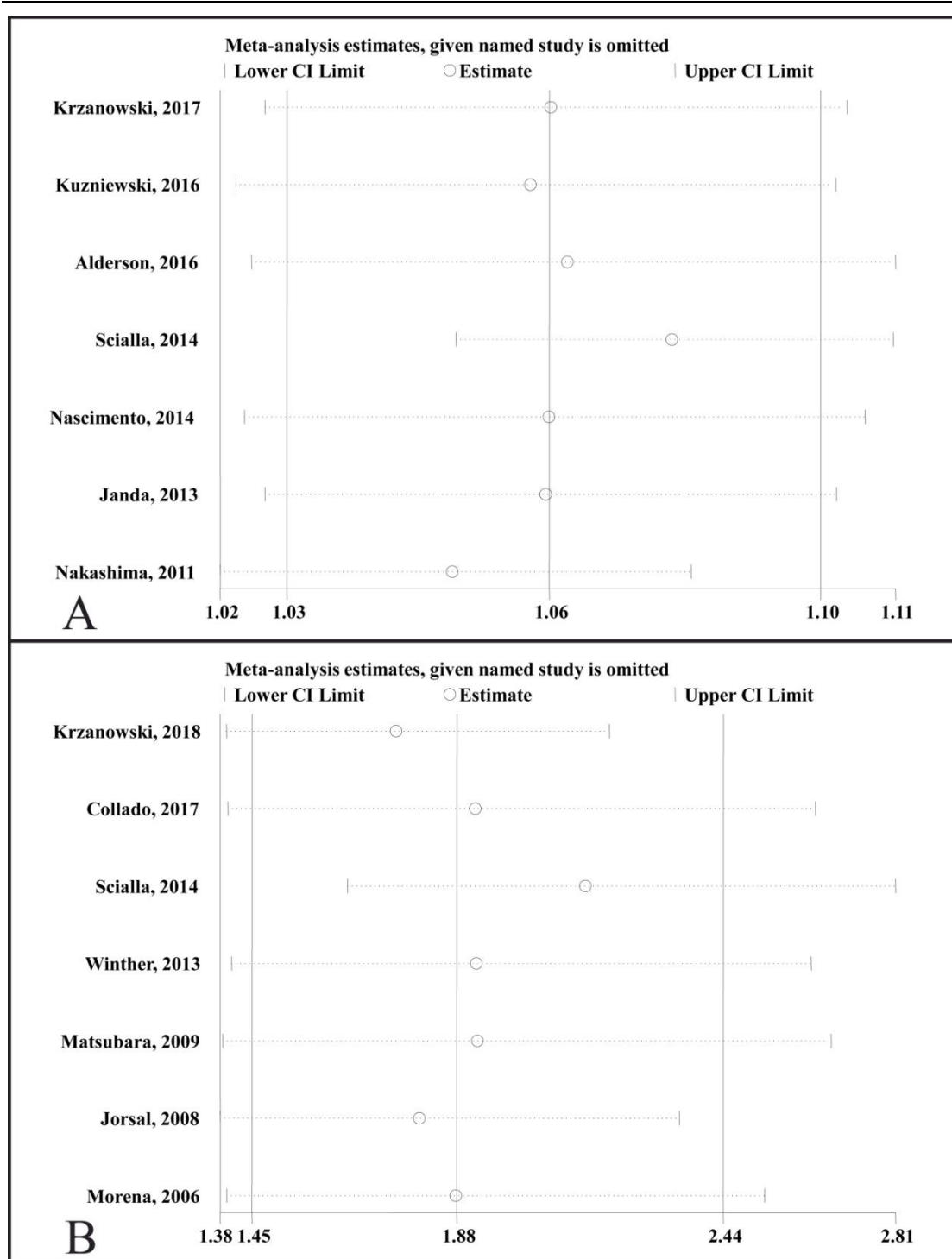


9

10 **Fig. 5 Subgroup analysis according to dialysis methods for the association of a 1 pmol/L**
 11 **increase in the circulating OPG level with all-cause mortality.** HD, ~~hemodialysis~~haemodialysis;
 12 PD, peritoneal dialysis; HR, hazard ratio; CI, confidence interval. The point estimates of adjusted
 13 HRs for each study are shown as solid boxes, and the size of each solid box indicates its weight in
 14 the analysis. Error bars are 95% CIs. The summary results are shown as solid prisms. 95% CIs are
 15 presented as the error bars or ~~width of the prisms~~ width. The summary adjusted HR of the HD
 16 only ~~HD~~ population was 1.10 (1.05, 1.14), without heterogeneity ($I^2 = 0$, $P = 0.395$).

1 |
2 | ***Sensitivity analysis***

3 | A sensitivity analysis was performed by **sequentially** removing one study **at a time**
4 | **(Fig. 6)**. We found that the adjusted HR for all-cause mortality **comparing that**
5 | **compared** the highest to the **lowerlowest** circulating OPG levels was not significantly
6 | changed **(Fig. 6A)**, and ~~neither was~~ the adjusted HR for the change in all-cause
7 | mortality **was not** associated with a 1 pmol/L increase in the circulating OPG level
8 | **(Fig. 6B)**.



1
2 **Fig. 6** Plot of sensitivity analysis by excluding one study **each at a time** and the pooling
3 **hazard ratio for the rest of the remaining studies**. CI, confidence interval. (A), sensitivity
4 analysis for the association of **the** circulating OPG level as a categorical variable with all-cause
5 mortality. (B), sensitivity analysis for the association of a 1 pmol/L increase in the circulating OPG
6 level with all-cause mortality.
7

1 Discussion

2 The present meta-analysis examined the association of circulating OPG levels
3 with all-cause mortality in CKD patients. The pooled results showed that a higher
4 circulating OPG level was associated with a higher all-cause mortality risk in CKD
5 patients (adjusted HR, 1.88; 95% CI, 1.45 — 2.44), with low heterogeneity ($I^2 =$
6 25.7%, $P = 0.233$). Each 1 pmol/L increase in the circulating OPG level was
7 associated with a 6% increased risk of all-cause mortality (adjusted HR, 1.06; 95% CI,
8 1.03–1.10), with moderate heterogeneity ($I^2 = 57.0%$, $P = 0.030$). These pooled results
9 suggested that OPG is an independent predictor of all-cause mortality in patients
10 with CKD.

11 In 2008, Nybo and Rasmussen conducted a systematic review on the relationship
12 between OPG levels and mortality [33]. A quantitative summary was not performed
13 due to methodological issues; nevertheless, the authors' findings supported the role of
14 OPG as a predictor of cardiovascular disease and mortality. OPG is a soluble tumour
15 necrosis factor/TNF superfamily receptor that has been implicated as being involved in
16 changes in vessel matrix composition, the development of macroangiopathy, plaque
17 destabilization and left ventricular hypertrophy [12, 34]. OPG is secreted directly
18 from the vascular wall, where it modulates apoptosis, inflammation, and calcium
19 deposition [35]. Additionally, its primary role may be in bone, where OPG is secreted
20 by osteoblasts to inhibit the differentiation and maturation of neighbouring osteoclasts
21 [35]. A higher level of OPG likely indicates a compensatory increase in the local level
22 of OPG locally in the vascular wall, which functions to counteract vascular calcium
23 deposition. Alternatively, the higher OPG level may result from the transition of
24 vascular smooth muscle cells to cells resembling osteoblasts. Together, these results
25 imply a role of the active process of vascular calcification in the high risks of

1 mortality and cardiovascular disease in CKD patients. Hence, the main implication of
2 elevated OPG activity is the promotion and progression of atherosclerotic lesions,
3 which might explain the significant association of OPG with mortality.

4 Dialysis was reported as a predictor of mortality in an end-stage renal disease
5 (ESRD) population, but the survival benefit of one modality over the other has not yet
6 been determined. One randomized controlled trial compared the mortality risk
7 between the HD and PD modalities after 5 years of follow-up and found that the HD
8 population suffered higher mortality than PD patients (HR, 3.8; 95% CI, 1.1 – 12.6)
9 [36]. Liem et al. also reported that the overall mortality was higher in patients treated
10 with HD and in patients treated with PD [37]. However, several observational studies
11 reported different results in that patients who received the two dialysis modalities had
12 similar mortality rates [38, 39] and that the PD modality led to a worse outcome than
13 the HD modality [40, 41]. A previous meta-analysis compared the two dialysis
14 modalities in Korean patients and suggested a higher risk of death in elderly patients
15 who received PD compared with those who received HD [42]. These controversial
16 results may be attributable to different baseline characteristics, which lead to
17 interactions between the dialysis modality and mortality outcome. In the present
18 meta-analysis, a subgroup analysis found that circulating OPG levels (as a categorical
19 variable or a continuous variable) were significantly associated with all-cause
20 mortality in the HD only population (**Fig. 3** and **Fig. 5**). This result supported OPG as
21 an independent predictor of all-cause mortality in patients who underwent only HD.
22 However, for the subgroup that included HD patients and others, no significant
23 association was found between each 1 pmol/L increase in the circulating OPG level
24 and all-cause mortality (adjusted HR, 1.04; 95% CI, 1.00–1.08). This result implied
25 that each 1 pmol/L increase in the circulating OPG level may not be an independent

1 predictor of all-cause mortality in non-HD patients. In the present meta-analysis, only
2 1 study [15] investigated the association between a 1 pmol/L increase in the
3 circulating OPG level and all-cause mortality in a population that underwent only PD,
4 and no significant result was found (adjust HR, 1.08; 95% CI, 0.96 – 1.22). Therefore,
5 more studies should be performed to investigate the association between OPG and
6 mortality in the PD only population.

7 The primary strength of the present meta-analysis was that the investigation of the
8 relationship between the circulating OPG level and all-cause mortality ~~not only~~
9 considered OPG as ~~not only~~ a categorical variable but also ~~as~~ a continuous variable.
10 The pooled results showed that each 1 pmol/L increase in the circulating OPG level
11 was associated with a 6% increased risk ~~of~~ all-cause mortality. In addition, a
12 subgroup analysis ~~by according to the dialysis methods~~ ~~method~~ suggested that an
13 elevated circulating OPG level was an independent predictor of all-cause mortality in
14 the HD only ~~HD~~-population. A previous meta-analysis showed that higher OPG levels
15 were not significantly associated with higher all-cause mortality in HD patients, with
16 a pooled HR of 1.80 (95% CI, 0.95 – 3.39) [43]. However, this previous meta-analysis
17 revealed high heterogeneity among studies ($I^2 = 85.6\%$, $P = 0.000$) [43]. Most
18 importantly, this previous meta-analysis did not investigate the association of a 1
19 pmol/L increase in the level of circulating OPG with the risk of all-cause mortality
20 [43].

21 ~~There were~~ This meta-analysis had several limitations ~~in this meta-analysis~~. First,
22 the studies included in this meta-analysis were essentially observational in nature; it
23 was impossible to fully adjust for potential confounders, such as nutritional status and
24 declining kidney function during follow-up. Second, when investigating the
25 relationship between the circulating OPG level as a categorical variable and all-cause

1 mortality, each study adjusted for different factors and had varied definitions and
2 cut-off values for the OPG groups. Third, ~~there was~~ a relatively small number of
3 studies ~~was~~ included in the meta-analysis. Thus, the funnel plots and Egger's test were
4 not valid because the accuracy of these tests is low ~~or~~and may even be misleading
5 when fewer than 10 studies are available for the quantitative summary [44]. **Fourth, in**
6 **the quantitative analysis, the HD only subgroup had a higher HR than the other groups.**
7 **The higher prevalence of classic risk factors and novel cardiovascular markers in HD**
8 **patients compared with those in PD or non-dialysis patients may also serve as an**
9 **important reason for this difference. More studies are needed to explore the impact of**
10 **classic risk factors and novel cardiovascular markers in the relationship between the**
11 **dialysis modality and mortality in CKD patients. Fifth, the present meta-analysis did**
12 **not further explore the role of OPG in cardiovascular mortality or cardiovascular**
13 **events in CKD patients. Cardiovascular death may be the leading cause of death in**
14 **patients with CKD, and these patients have a 10–30 times higher cardiovascular**
15 **mortality risk than the general population [45]. A previous meta-analysis supported**
16 **the predictive value of OPG for cardiovascular mortality in HD patients (adjusted HR,**
17 **2.53; 95% CI, 1.29 – 4.94) despite its heterogeneity [43]. However, because our aim**
18 **was to investigate the association of OPG and all-cause mortality in CKD patients,**
19 **some studies that focused on cardiovascular mortality or cardiovascular events were**
20 **not included in the present meta-analysis. Thus, it was not appropriate to analyse the**
21 **possible role of OPG in cardiovascular mortality and cardiovascular events based on**
22 **the included studies in the present meta-analysis. We plan to explore the association of**
23 **OPG and cardiovascular mortality or cardiovascular events in our next study. Finally,**
24 selective reporting bias in the literature may have influenced the present findings.

25 Heterogeneity was low ($I^2 = 25.7\%$, $P = 0.233$) for the qualitative meta-analysis

1 but moderate ($I^2= 57.0\%$, $P = 0.030$) for the quantitative meta-analysis. This different
2 result may be due to confounding variables (Table 1), which resulted in the adjusted
3 HRs. The adjustment for potentially confounding variables varied largely across the
4 included studies and included epidemiological characteristics, cardiovascular risk
5 factors, biological laboratory variables and established biomarkers of mortality. To
6 explore more evidence-based medical support for the relationship between OPG and
7 mortality in CKD patients, harmonization of adjusted variables desirable for future
8 research was performed.

9 **Conclusions**

10 In conclusion, the present meta-analysis found that elevated circulating OPG
11 levels independently predicted an increased risk of all-cause mortality in patients with
12 CKD. Each 1 pmol/L increase in the level of circulating OPG was associated with a 6%
13 increased risk of all-cause mortality. OPG potentially serves as an independent
14 predictor of all-cause mortality in CKD patients, especially in the HD only HD
15 population. The mechanism underlying this observation deserves further investigation,
16 as does the predictive performance of OPG as a biomarker in the clinical setting.

17 **Acknowledgement**

18 This work was funded by the Natural Science Foundation of China (Grant no.
19 81600545), the Natural Science Foundation of Guangdong Province, China (Grant no.
20 2017A030310199) and the Natural Science Foundation of Guangdong Province,
21 China (Grant no. 2017A030313720)

22 **Competing Interests**

23 The authors have declared that no competing interest exists.

24 **References**

25 1. Saran R, Li Y, Robinson B, Ayanian J, Balkrishnan R, Bragg-Gresham J, et al. US
26 Renal Data System 2014 Annual Data Report: Epidemiology of Kidney Disease in the

- 1 United States. American journal of kidney diseases : the official journal of the
2 National Kidney Foundation. 2015; 66: S1-S305.
- 3 2. Zhang L, Wang F, Wang L, Wang W, Liu B, Liu J, et al. Prevalence of chronic
4 kidney disease in China: a cross-sectional survey. *Lancet*. 2012; 379: 815-22.
- 5 3. Chen W, Chen W, Wang H, Dong X, Liu Q, Mao H, et al. Prevalence and risk
6 factors associated with chronic kidney disease in an adult population from southern
7 China. *Nephrol Dial Transplant*. 2009; 24: 1205-12.
- 8 4. Weiner DE, Tighiouart H, Amin MG, Stark PC, MacLeod B, Griffith JL, et al.
9 Chronic kidney disease as a risk factor for cardiovascular disease and all-cause
10 mortality: a pooled analysis of community-based studies. *Journal of the American
11 Society of Nephrology : JASN*. 2004; 15: 1307-15.
- 12 5. Nakamura K, Nakagawa H, Murakami Y, Kitamura A, Kiyama M, Sakata K, et al.
13 Smoking increases the risk of all-cause and cardiovascular mortality in patients with
14 chronic kidney disease. *Kidney international*. 2015; 88: 1144-52.
- 15 6. Kovesdy CP, Bleyer AJ, Molnar MZ, Ma JZ, Sim JJ, Cushman WC, et al. Blood
16 pressure and mortality in U.S. veterans with chronic kidney disease: a cohort study.
17 *Ann Intern Med*. 2013; 159: 233-42.
- 18 7. Weiner DE, Tighiouart H, Vlagopoulos PT, Griffith JL, Salem DN, Levey AS, et
19 al. Effects of anemia and left ventricular hypertrophy on cardiovascular disease in
20 patients with chronic kidney disease. *Journal of the American Society of Nephrology :
21 JASN*. 2005; 16: 1803-10.
- 22 8. Kuzniewski M, Fedak D, Dumnicka P, Stepień E, Kusnierz-Cabala B, Cwynar M,
23 et al. Osteoprotegerin and osteoprotegerin/TRAIL ratio are associated with
24 cardiovascular dysfunction and mortality among patients with renal failure. *Advances
25 in medical sciences*. 2016; 61: 269-75.
- 26 9. Alderson HV, Ritchie JP, Middleton R, Larsson A, Larsson TE, Kalra PA. FGF-23
27 and Osteoprotegerin but not Fetuin-A are associated with death and enhance risk
28 prediction in non-dialysis chronic kidney disease stages 3–5. *Nephrology*. 2016; 21:
29 566-73.
- 30 10. Nascimento MM, Hayashi SY, Riella MC, Lindholm B. Elevated levels of plasma
31 osteoprotegerin are associated with all-cause mortality risk and atherosclerosis in
32 patients with stages 3 to 5 chronic kidney disease. *Brazilian journal of medical and
33 biological research = Revista brasileira de pesquisas medicas e biologicas*. 2014; 47:
34 995-1002.
- 35 11. Simonet WS, Lacey DL, Dunstan CR, Kelley M, Chang MS, Luthy R, et al.
36 Osteoprotegerin: a novel secreted protein involved in the regulation of bone density.
37 *Cell*. 1997; 89: 309-19.
- 38 12. Montanez-Barragan A, Gomez-Barrera I, Sanchez-Nino MD, Uceros AC,
39 Gonzalez-Espinoza L, Ortiz A. Osteoprotegerin and kidney disease. *Journal of
40 nephrology*. 2014; 27: 607-17.
- 41 13. Gordin D, Soro-Paavonen A, Thomas MC, Harjutsalo V, Saraheimo M, Bjerre M,
42 et al. Osteoprotegerin is an independent predictor of vascular events in Finnish adults
43 with type 1 diabetes. *Diabetes care*. 2013; 36: 1827-33.
- 44 14. Harb L. Relationship of osteoprotegerin level and chronic kidney
45 disease-metabolic bone disease (CKD-MBD). *Nephrology Dialysis Transplantation*.
46 2013; 28: i467-i8.
- 47 15. Janda K, Krzanowski M, Dumnicka P, Kusnierz-Cabala B, Sułowicz W. Calcium
48 scoring as a non-invasive, significant predictor of mortality in dialysis patients.
49 *Nephrology Dialysis Transplantation*. 2013; 28: i443.
- 50 16. Delanaye P, Cavalier E, Moranne O, Krzesinski JM, Warling X, Smelten N, et al.

-
- 1 Clinical and biological variables associated with mortality in hemodialysis patients.
2 *Nephrology Dialysis Transplantation*. 2013; 28: i480.
 - 3 17. Moher D, Liberati A, Tetzlaff J, Altman DG, and the PG. Preferred reporting
4 items for systematic reviews and meta-analyses: The prisma statement. *Annals of*
5 *Internal Medicine*. 2009; 151: 264-9.
 - 6 18. National Kidney F. K/DOQI clinical practice guidelines for chronic kidney
7 disease: evaluation, classification, and stratification. *American journal of kidney*
8 *diseases : the official journal of the National Kidney Foundation*. 2002; 39: S1-266.
 - 9 19. Stang A. Critical evaluation of the Newcastle-Ottawa scale for the assessment of
10 the quality of nonrandomized studies in meta-analyses. *Eur J Epidemiol*. 2010; 25:
11 603-5.
 - 12 20. DerSimonian R, Laird N. Meta-analysis in clinical trials. *Control Clin Trials*.
13 1986; 7: 177-88.
 - 14 21. Higgins JP, Thompson SG, Deeks JJ, Altman DG. Measuring inconsistency in
15 meta-analyses. *BMJ*. 2003; 327: 557-60.
 - 16 22. Higgins JP, Thompson SG. Quantifying heterogeneity in a meta-analysis. *Stat*
17 *Med*. 2002; 21: 1539-58.
 - 18 23. Higgins JP. *Cochrane handbook for systematic reviews of interventions*. Version
19 5.1.0 [updated March 2011]. The Cochrane Collaboration.
20 www.cochrane-handbook.org. 2011.
 - 21 24. Krzanowski M, Krzanowska K, Dumnicka P, Gajda M, Woziwodzka K, Fedak D,
22 et al. Elevated Circulating Osteoprotegerin Levels in the Plasma of Hemodialyzed
23 Patients With Severe Artery Calcification. *Therapeutic apheresis and dialysis : official*
24 *peer-reviewed journal of the International Society for Apheresis, the Japanese Society*
25 *for Apheresis, the Japanese Society for Dialysis Therapy*. 2018.
 - 26 25. Krzanowski M, Krzanowska K, Gajda M, Dumnicka P, Dziewierz A,
27 Woziwodzka K, et al. Pentraxin 3 as a new indicator of cardiovascular-related death in
28 patients with advanced chronic kidney disease. *Polish archives of internal medicine*.
29 2017; 127: 170-7.
 - 30 26. Collado S, Coll E, Nicolau C, Azqueta M, Pons M, Cruzado JM, et al. Serum
31 osteoprotegerin in prevalent hemodialysis patients: associations with mortality,
32 atherosclerosis and cardiac function. *BMC nephrology*. 2017; 18: 290.
 - 33 27. Scialla JJ, Kao WH, Crainiceanu C, Sozio SM, Oberai PC, Shafi T, et al.
34 Biomarkers of vascular calcification and mortality in patients with ESRD. *Clinical*
35 *journal of the American Society of Nephrology : CJASN*. 2014; 9: 745-55.
 - 36 28. Winther S, Christensen JH, Flyvbjerg A, Schmidt EB, Jorgensen KA,
37 Skou-Jorgensen H, et al. Osteoprotegerin and mortality in hemodialysis patients with
38 cardiovascular disease. *Clinical nephrology*. 2013; 80: 161-7.
 - 39 29. Nakashima A, Carrero JJ, Qureshi AR, Hirai T, Takasugi N, Ueno T, et al. Plasma
40 osteoprotegerin, arterial stiffness, and mortality in normoalbuminemic Japanese
41 hemodialysis patients. *Osteoporosis international : a journal established as result of*
42 *cooperation between the European Foundation for Osteoporosis and the National*
43 *Osteoporosis Foundation of the USA*. 2011; 22: 1695-701.
 - 44 30. Matsubara K, Stenvinkel P, Qureshi AR, Carrero JJ, Axelsson J, Heimbürger O, et
45 al. Inflammation modifies the association of osteoprotegerin with mortality in chronic
46 kidney disease. *Journal of nephrology*. 2009; 22: 774-82.
 - 47 31. Jorsal A, Tarnow L, Flyvbjerg A, Parving HH, Rossing P, Rasmussen LM. Plasma
48 osteoprotegerin levels predict cardiovascular and all-cause mortality and deterioration
49 of kidney function in type 1 diabetic patients with nephropathy. *Diabetologia*. 2008;
50 51: 2100-7.

-
- 1 32. Morena M, Terrier N, Jaussent I, Leray-Moragues H, Chalabi L, Rivory JP, et al.
2 Plasma osteoprotegerin is associated with mortality in hemodialysis patients. *Journal*
3 *of the American Society of Nephrology : JASN*. 2006; 17: 262-70.
- 4 33. Nybo M, Rasmussen LM. The capability of plasma osteoprotegerin as a predictor
5 of cardiovascular disease: a systematic literature review. *European journal of*
6 *endocrinology*. 2008; 159: 603-8.
- 7 34. Kiechl S, Werner P, Knoflach M, Furtner M, Willeit J, Schett G. The
8 osteoprotegerin/RANK/RANKL system: a bone key to vascular disease. *Expert Rev*
9 *Cardiovasc Ther*. 2006; 4: 801-11.
- 10 35. Reid P, Holen I. Pathophysiological roles of osteoprotegerin (OPG). *Eur J Cell*
11 *Biol*. 2009; 88: 1-17.
- 12 36. Korevaar JC, Feith GW, Dekker FW, van Manen JG, Boeschoten EW, Bossuyt
13 PM, et al. Effect of starting with hemodialysis compared with peritoneal dialysis in
14 patients new on dialysis treatment: a randomized controlled trial. *Kidney international*.
15 2003; 64: 2222-8.
- 16 37. Liem YS, Wong JB, Hunink MG, de Charro FT, Winkelmayer WC. Comparison
17 of hemodialysis and peritoneal dialysis survival in The Netherlands. *Kidney*
18 *international*. 2007; 71: 153-8.
- 19 38. Chang YK, Hsu CC, Hwang SJ, Chen PC, Huang CC, Li TC, et al. A comparative
20 assessment of survival between propensity score-matched patients with peritoneal
21 dialysis and hemodialysis in Taiwan. *Medicine*. 2012; 91: 144-51.
- 22 39. Mehrotra R, Chiu YW, Kalantar-Zadeh K, Bargman J, Vonesh E. Similar
23 outcomes with hemodialysis and peritoneal dialysis in patients with end-stage renal
24 disease. *Arch Intern Med*. 2011; 171: 110-8.
- 25 40. Termorshuizen F, Korevaar JC, Dekker FW, Van Manen JG, Boeschoten EW,
26 Krediet RT, et al. Hemodialysis and peritoneal dialysis: comparison of adjusted
27 mortality rates according to the duration of dialysis: analysis of The Netherlands
28 Cooperative Study on the Adequacy of Dialysis 2. *Journal of the American Society of*
29 *Nephrology : JASN*. 2003; 14: 2851-60.
- 30 41. Winkelmayer WC, Glynn RJ, Mittleman MA, Levin R, Pliskin JS, Avorn J.
31 Comparing mortality of elderly patients on hemodialysis versus peritoneal dialysis: a
32 propensity score approach. *Journal of the American Society of Nephrology : JASN*.
33 2002; 13: 2353-62.
- 34 42. Han SS, Park JY, Kang S, Kim KH, Ryu DR, Kim H, et al. Dialysis Modality and
35 Mortality in the Elderly: A Meta-Analysis. *Clinical journal of the American Society of*
36 *Nephrology : CJASN*. 2015; 10: 983-93.
- 37 43. Pichler G, Haller MC, Kainz A, Wolf M, Redon J, Oberbauer R. Prognostic value
38 of bone- and vascular-derived molecular biomarkers in hemodialysis and renal
39 transplant patients: a systematic review and meta-analysis. *Nephrol Dial Transplant*.
40 2017; 32: 1566-78.
- 41 44. Lau J, Ioannidis JP, Terrin N, Schmid CH, Olkin I. The case of the misleading
42 funnel plot. *BMJ*. 2006; 333: 597-600.
- 43 45. Foley RN, Parfrey PS, Sarnak MJ. Clinical epidemiology of cardiovascular
44 disease in chronic renal disease. *American journal of kidney diseases : the official*
45 *journal of the National Kidney Foundation*. 1998; 32: S112-9.

46

47